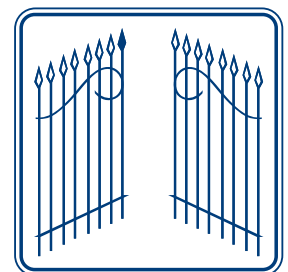


the total entry control solution



gate, barrier
and bollard
automation

catalogue 2007/08



FADINI®

Distributed by:
BPT Security Systems (UK) Ltd



QUICK REFERENCE GUIDE

SWING GATE GUIDE

| | | Page | | |
|-------------|-------------------------|-------------------------------|---------------------------|----|
| Swing Gates | pedestrian | 1.5m → Pedestrian Gate Closer | 2 | |
| | on-the-gate residential | 2.0m each leaf | → Nupi Kit Single Locking | 4 |
| | | 4.0m single gate | → System 880 Kit | 5 |
| | | 1.8m each leaf | → Hindi 880 Sprint Kit | 6 |
| | | | → single locking | 7 |
| | | | → double locking | 7 |
| | | Up to 5.0m | → Hindi 880 | 13 |
| | | Large pillars | → Aproli Kit | 8 |
| | | | → Aproli 280 | 15 |
| | | | → various | 15 |
| | | on-the-gate commercial | → MEC 800 | 14 |
| | | | → various | 14 |
| | | underground residential | → Combi Kit | 9 |
| | | | → double locking | 9 |
| | → gate support option | | 10 | |
| | | → braking option | 11 | |
| | | 2.0m each leaf | → Combi 740 | 16 |
| | | Up to 3.0m each leaf | → various | 16 |
| | | Drainage problem | → Drive 700 | 17 |
| | | → various | 17 | |
| | underground commercial | → MEC 700 | 18 | |
| | | → various | 18 | |

SLIDING GATE GUIDE

| | | | | |
|---------------|-------------|---------------|------------------------|----|
| Sliding Gates | residential | up to 400kg | → Girri 130 Kit | 12 |
| | | up to 800kg | → Nyota 115 | 19 |
| | commercial | up to 800kg | → MEC 200 single phase | 19 |
| | | up to 1,250kg | → MEC 200 3 phase | 19 |
| | | up to 4,000kg | → Fibo 400 3 phase | 20 |

BARRIER GUIDE

| | | | | |
|----------|----------------------|----------------------------|--------------------------|----|
| Barriers | light commercial use | → Barri 88 4m beam | → articulated arm option | 21 |
| | heavy duty cycle | → BAYT 980 up to 8.5m beam | → without skirt | 22 |
| | | | → with skirt | 23 |

BOLLARD GUIDE

| | | | |
|----------|-------------------------|--|----|
| Bollards | 100mm dia | → Coral | 24 |
| | 200mm dia | → Vigilo | 24 |
| | 275mm dia | → Strabuc | 25 |
| | 275mm dia anti ram-raid | → Strabuc Armoured | 25 |
| | high duty cycle | → Coral, Vigilo, Strabuc Heavy Use, Air-Cooled | 26 |

PEDESTRIAN GATE CLOSER

A gate closer for use with pedestrian gates up to 1.5m where the gate is to be manually operated.

No electrical supply is required for the closer.

An electrical lock may be needed for locking the gate.

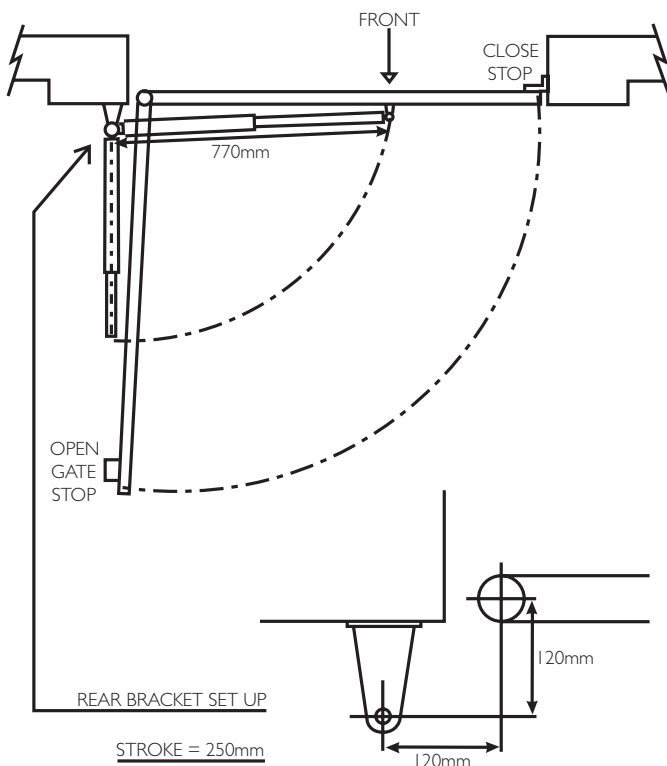


| Part No. | Description |
|------------|---|
| F/CLOSER | The operator is gas and oil-filled and has a dampening device to slow the gate down before its closed position. An adjusting valve provides for the required closing force during the gate closing and opening positions. |
| F/BRACKET | Fixing brackets (2 brackets required for each closer). |
| F/ADJUSTER | Valve adjuster to release gas and provide an accurate adjustment to the required closing force. |

NB: Please see pages 30-37 for access control and safety equipment.

When installing the above operator it is necessary to have a gate stop in the open/closed position.

Gas closer set up diagram



BPT BUNDLE BENEFITS!



Bundle benefits - save 10% off your trade price when you purchase an audio or video entry kit with any featured gate automation kit on pages 4-12!

Audio entry kits

Entry control kit A

VSET1N/HPYCUK
Targha aluminium audio entry panel and Lynea handset



Entry control kit B

VSET1N/HNA
Targha aluminium audio entry panel with integrated access control keypad and Lynea handset



Entry control kit C

AKIT/1VRVC
Flush vandal resistant audio entry panel and Lynea handset



Entry control kit D

AKIT/1VRACYC
Flush vandal resistant audio entry panel with integrated access control keypad and Lynea handset



Video entry kits

Entry control kit E

VSET/200YVF-1HSVUK
Targha aluminium video entry panel and Lynea black & white monitor



Entry control kit F

VKIT/1HNAYVF
Targha aluminium video entry panel with black & white camera and integrated access control keypad with Lynea black & white monitor



Entry control kit G

VKIT/1VRVVF
Flush vandal resistant video entry panel and Lynea black & white monitor



Entry control kit H

VKIT/1VRACYVF
Flush vandal resistant video entry panel with integrated access control keypad and Lynea black & white monitor



ON-THE-GATE KITS

NUPI 66 KIT



'On-the-gate' kit for double swing gates with a maximum opening of 4.0m

The Nupi 66 Kit comprises:

- 2 x Nupi 66 Electro Hydraulic Operators with electric cable and fixings
- 1 x Electronic Control Unit
- 1 x Radio Receiver
- 2 x Hand-Held Transmitters
- 1 x Rod Aerial
- 1 x Pair of Safety Photocells

| Max Gate Width | Gate Weight | Open Time | Locking Open | Locking Closed | Braking | Lock Required | Opening Deg |
|----------------|-------------|------------|--------------|----------------|---------|---------------|-------------|
| 2m/leaf | 120kg | 18 seconds | NO | YES | NO | NO | 95° |

This kit is recommended for single residential properties and light commercial use. The Nupi 66 Kit can be fitted to both new and existing gates.

The compact design incorporates the motor, valve assembly and innovative lobe pump which ensures a smooth, powerful yet quiet operation.

The gates will hydraulically lock in the **closed** position only. No locking device is required.

Variable current sensing regulates the operating force. One pair of safety photocells is supplied. Additional safety devices can be added if required.

A manual release key allows the gates to be opened in the event of an emergency or power failure.

The kit is easily integrated with access control, audio/video entry systems and other forms of control.

The Nupi 66 kit is not recommended for use on in-filled gates where high winds exist. Physical gate stops must be installed in the open and closed position.

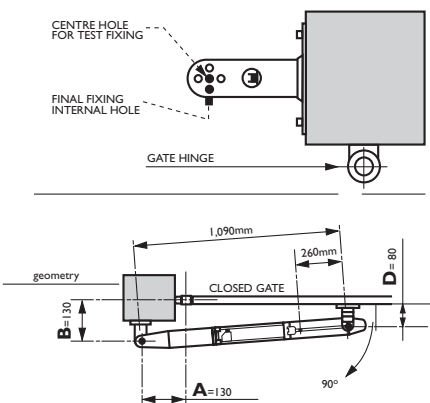
NB: Please see pages 30-37 for access control and safety equipment.



| Part No. | Description |
|-------------|---|
| F/KITNUPI66 | Nupi 66 Kit |
| F/A432T | Additional Transmitter - Astro 43/2TR |
| F/TRIFO11 | Additional Photocells (transmitter and receiver) - Trifo 11 |
| F/TRIFOPOST | Support Posts for Photocells - 0.5m high, base fixing |

Bracket fixing details

Bundles



| | |
|--------------|--|
| F/KITNUPI66A | Nupi 66 Kit with Audio Entry Control Kit A |
| F/KITNUPI66B | Nupi 66 Kit with Audio Entry Control Kit B |
| F/KITNUPI66C | Nupi 66 Kit with Audio Entry Control Kit C |
| F/KITNUPI66D | Nupi 66 Kit with Audio Entry Control Kit D |
| F/KITNUPI66E | Nupi 66 Kit with Video Entry Control Kit E |
| F/KITNUPI66F | Nupi 66 Kit with Video Entry Control Kit F |
| F/KITNUPI66G | Nupi 66 Kit with Video Entry Control Kit G |
| F/KITNUPI66H | Nupi 66 Kit with Video Entry Control Kit H |

For full details of the entry control kits, please see page 3.

ON-THE-GATE KITS

SYSTEM 880 KIT



'On-the-gate' kit for a single swing gate with a maximum opening of 4.0m

The System 880 Kit comprises:

- 1 x Hindi 880 Electro Hydraulic Operator with electric cable and fixings
- 1 x Electronic Control Unit
- 1 x Radio Receiver
- 2 x Hand-Held Transmitters
- 1 x Rod Aerial
- 1 x Pair of Safety Photocells
- 1 x Electric Lock

| Max Gate Width | Gate Weight | Open Time | Locking Open | Locking Closed | Braking | Lock Required | Opening Deg |
|----------------|-------------|------------|--------------|----------------|---------|---------------|-------------|
| 4m | 180kg | 24 seconds | NO | NO | NO | YES/supplied | 90° |

This kit is recommended for single residential properties and light commercial use. The System 880 Kit can be fitted to both new and existing gates and is ideal for 5 bar and wooden farm-style gates. The kit is suitable for both wooden and metal gates.

The gate is secured with the lock supplied. The electric lock can be key-released and the gate opened manually in the event of power failure. The hydraulic power is set with adjustable pressure valves that are built into the operator. One pair of safety photocells is supplied. Additional safety devices can be added if required.

The kit is easily integrated with access control, audio/video entry systems and other forms of control.

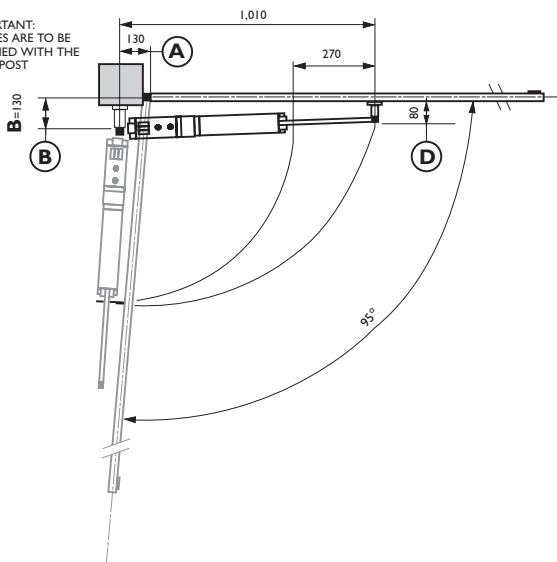
The System 880 Kit is not recommended for use on in-filled gates where high winds exist. Physical gate stops must be installed in the open and closed position.

NB: See pages 30-37 for access control and safety equipment.



Bracket fixing details

IMPORTANT: HINGES ARE TO BE ALIGNED WITH THE GATE POST



| Part No. | Description |
|--------------|---|
| F/KITH880SSG | System 880 Kit |
| F/A432T | Additional Transmitter - Astro 43/2TR |
| F/TRIFO11 | Additional Photocells (transmitter and receiver) - Trifo 11 |
| F/TRIFOPOST | Support Posts for Photocells - 0.5m high, base fixing |

Bundles

| | |
|---------------|---|
| F/KITH880SSGA | System 880 Kit with Audio Entry Control Kit A |
| F/KITH880SSGB | System 880 Kit with Audio Entry Control Kit B |
| F/KITH880SSGC | System 880 Kit with Audio Entry Control Kit C |
| F/KITH880SSGD | System 880 Kit with Audio Entry Control Kit D |
| F/KITH880SSGE | System 880 Kit with Video Entry Control Kit E |
| F/KITH880SSGF | System 880 Kit with Video Entry Control Kit F |
| F/KITH880SSGG | System 880 Kit with Video Entry Control Kit G |
| F/KITH880SSGH | System 880 Kit with Video Entry Control Kit H |

For full details of the entry control kits, please see page 3.

ON-THE-GATE KITS

HINDI 880 SPRINT KIT hydraulic locking in closed position



'On-the-gate' kit for double swing gates with a maximum opening of 3.6m

The Hindi 880 Sprint Kit comprises:

- 2 x Hindi 880 Electro Hydraulic Operators with electric cable and fixings
- 1 x Electronic Control Unit
- 1 x Radio Receiver
- 2 x Hand-Held Transmitters
- 1 x Rod Aerial
- 1 x Pair of Safety Photocells

| Max Gate Width | Gate Weight | Open Time | Locking Open | Locking Closed | Braking | Lock Required | Opening Deg |
|----------------|-------------|------------|--------------|----------------|---------|---------------|-------------|
| 1.8m/leaf | 120kg | 18 seconds | NO | YES | NO | NO | 90° |

This kit is recommended for single residential properties and light commercial use. The kit can be fitted to both new and existing gates.

Hydraulic locking is provided in the closed position.

The hydraulic power is set with adjustable pressure valves that are built into the operator. One pair of safety photocells is supplied. Additional safety devices can be added if required.

A manual release allows the gates to be opened in the event of an emergency or power failure.

The kit is easily integrated with access control, audio/video entry systems and other forms of control.

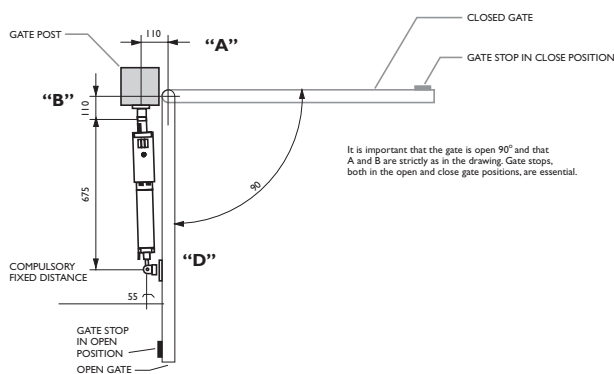
Physical gate stops must be installed in the open and closed position.

NB: Please see pages 30-37 for access control and safety equipment.



| Part No. | Description |
|---------------|--|
| F/KITH880SKSL | Hindi 880 Sprint Kit (single locking) |
| F/A432T | Additional Transmitter - Astro 43/2TR |
| F/TRIFO I I | Additional Photocells (transmitter and receiver) - Trifo I I |
| F/TRIFOPOST | Support Posts for Photocells - 0.5m high, base fixing |

Bracket fixing details



Bundles

| | |
|----------------|--|
| F/KITH880SKSLA | Hindi 880 Sprint Kit (SL) with Audio Entry Control Kit A |
| F/KITH880SKSLB | Hindi 880 Sprint Kit (SL) with Audio Entry Control Kit B |
| F/KITH880SKSLC | Hindi 880 Sprint Kit (SL) with Audio Entry Control Kit C |
| F/KITH880SKSLD | Hindi 880 Sprint Kit (SL) with Audio Entry Control Kit D |
| F/KITH880SKSLE | Hindi 880 Sprint Kit (SL) with Video Entry Control Kit E |
| F/KITH880SKSLF | Hindi 880 Sprint Kit (SL) with Video Entry Control Kit F |
| F/KITH880SKSLG | Hindi 880 Sprint Kit (SL) with Video Entry Control Kit G |
| F/KITH880SKSLH | Hindi 880 Sprint Kit (SL) with Video Entry Control Kit H |

For full details of the entry control kits, please see page 3.

ON-THE-GATE KITS

HINDI 880 SPRINT KIT with double locking

'On-the-gate' kit for double swing gates with a maximum opening of 3.6m

The Hindi 880 Sprint Kit comprises:

- 2 x Hindi 880 Electro Hydraulic Operators with electric cable and fixings
- 1 x Electronic Control Unit
- 1 x Radio Receiver
- 2 x Hand-Held Transmitters
- 1 x Rod Aerial
- 1 x Pair of Safety Photocells



| Max Gate Width | Gate Weight | Open Time | Locking Open | Locking Closed | Braking | Lock Required | Opening Deg |
|----------------|-------------|------------|--------------|----------------|---------|---------------|-------------|
| 1.8m/leaf | 120kg | 18 seconds | YES | YES | NO | NO | 90° |

This kit is recommended for single residential properties and light commercial use. The kit can be fitted to both new and existing gates.

Hydraulic locking is provided in both the open and closed position. No locking device is required.

The hydraulic power is set with adjustable pressure valves that are built into the operator. One pair of safety photocells is supplied. Additional safety devices can be added if required.

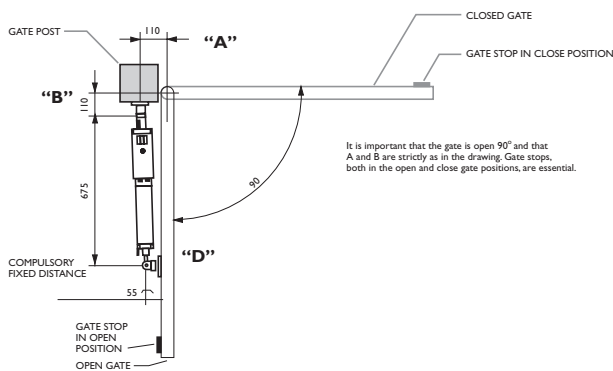
A manual release allows the gates to be opened in the event of an emergency or power failure.

The kit is easily integrated with access control, audio/video entry systems and other forms of control.

Physical gate stops must be installed in the open and closed position.

NB: Please see pages 30-37 for access control and safety equipment.

Bracket fixing details



Part No.

Description

| | |
|---------------|---|
| F/KITH880SKDL | Hindi 880 Sprint Kit (double locking) |
| F/A432T | Additional Transmitter - Astro 43/2TR |
| F/TRIFO11 | Additional Photocells (transmitter and receiver) - Trifo 11 |
| F/TRIFOPOST | Support Posts for Photocells - 0.5m high, base fixing |

Bundles

| | |
|----------------|--|
| F/KITH880SKDLA | Hindi 880 Sprint Kit (DL) with Audio Entry Control Kit A |
| F/KITH880SKDLB | Hindi 880 Sprint Kit (DL) with Audio Entry Control Kit B |
| F/KITH880SKDLC | Hindi 880 Sprint Kit (DL) with Audio Entry Control Kit C |
| F/KITH880SKDLD | Hindi 880 Sprint Kit (DL) with Audio Entry Control Kit D |
| F/KITH880SKDLE | Hindi 880 Sprint Kit (DL) with Video Entry Control Kit E |
| F/KITH880SKDLF | Hindi 880 Sprint Kit (DL) with Video Entry Control Kit F |
| F/KITH880SKDLG | Hindi 880 Sprint Kit (DL) with Video Entry Control Kit G |
| F/KITH880SKDLH | Hindi 880 Sprint Kit (DL) with Video Entry Control Kit H |

For full details of the entry control kits, please see page 3.

ON-THE-GATE KITS

APROLI 280 KIT



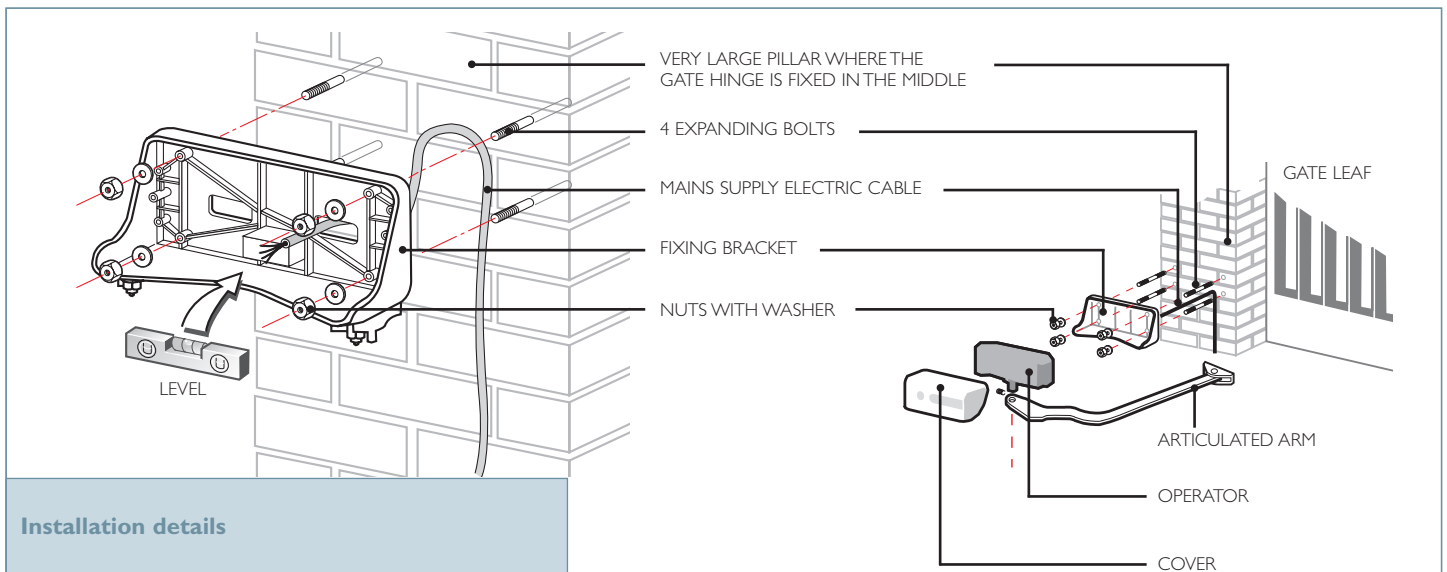
'On-the-gate' kit for double swing gates with large pillars and a maximum opening of 4.0m

The Aproli 280 Kit comprises:

- 2 x Aproli 280 Electro Hydraulic Operators with fixings
- 1 x Electronic Control Unit
- 1 x Radio Receiver
- 2 x Hand-Held Transmitters
- 1 x Rod Aerial
- 1 x Pair of Safety Photocells

Physical gate stops must be installed in the open and closed position. Note: this kit is not recommended for infilled, wind-affected gates (see page 15).

| Max Gate Width | Gate Weight | Open Time | Locking Open | Locking Closed | Braking | Lock Required | Opening Deg |
|----------------|-------------|------------|--------------|----------------|---------|---------------|-------------|
| 2m/leaf | 110kg | 23 seconds | YES | YES | NO | NO | 90° |



Installation details

This kit is recommended for single residential properties and light commercial use. The kit can be fitted to both new and existing gates. Ideal for gates of special architectural value.

Hydraulic locking is provided in both the open and closed position. A lock is required when used on in-filled gates.

The hydraulic power is set with adjustable pressure valves that are built into the operator. One pair of safety photocells is supplied. Additional safety devices can be added if required.

A manual release allows the gates to be opened in the event of an emergency or power failure.

The kit is easily integrated with access control, audio/video entry systems and other forms of control.

NB: Please see pages 30-37 for access control and safety equipment.

| Part No. | Description |
|--|---|
| F/KITA280DL | Aproli 280 Kit |
| F/A432T | Additional Transmitter - Astro 43/2TR |
| F/TRIFO11 | Additional Photocells (transmitter and receiver) - Trifo 11 |
| F/TRIFOPOST | Support Posts for Photocells - 0.5m high, base fixing |
| Bundles | |
| F/KITA280DLA | Aproli 280 Kit with Audio Entry Control Kit A |
| F/KITA280DLB | Aproli 280 Kit with Audio Entry Control Kit B |
| F/KITA280DLC | Aproli 280 Kit with Audio Entry Control Kit C |
| F/KITA280DLD | Aproli 280 Kit with Audio Entry Control Kit D |
| F/KITA280DLE | Aproli 280 Kit with Video Entry Control Kit E |
| F/KITA280DLF | Aproli 280 Kit with Video Entry Control Kit F |
| F/KITA280DLG | Aproli 280 Kit with Video Entry Control Kit G |
| F/KITA280DLH | Aproli 280 Kit with Video Entry Control Kit H |
| For full details of the entry control kits, please see page 3. | |

BELOW GROUND KITS

COMBI 740 KIT



Below ground kit for double swing gates with a maximum width of 4.0m

- The Combi 740 Kit comprises:
- 2 x Combi 740 all in one underground operators
 - 1 x Electronic Control Unit
 - 1 x Radio Receiver
 - 2 x Hand-Held Transmitters
 - 1 x Rod Aerial
 - 1 x Pair of Safety Photocells



| Max Gate Width | Gate Weight | Open Time | Locking Open | Locking Closed | Braking | Lock Required | Opening Deg |
|----------------|-------------|------------|--------------|----------------|---------|---------------|--------------|
| 2m/leaf | 700kg/leaf | 15 seconds | YES | YES | NO | NO | 110° or 175° |

This kit is recommended for single residential properties and light commercial use. The Combi 740 Kit can be fitted to both timber and metal gates, with a maximum opening of 4.0m. Timber gates may require a strengthening plate on the bottom of the gate.

The gates hydraulically lock in both the open and closed position without the need for a lock.

The hydraulic power is set with adjustable pressure valves that are built into the operator. One pair of safety photocells is supplied. Additional safety devices can be added if required.

In the event of an emergency or power failure, the operator has a special release shoe enabling manual release from both sides of the gate.

The kit is easily integrated with access control, audio/video entry systems and other forms of control.

Physical gate stops must be installed in the open and closed position. A suitable soakaway must be provided.

NB: Please see pages 30-37 for access control and safety equipment.

| Enclosure installation | | Bundles | |
|------------------------|---|---|--|
| | | <p>Combi 740 Kit bundles - 110 degree opening</p> <p>F/KITC740110DLA Combi 740 Kit (110°) with Audio Entry Control Kit A</p> <p>F/KITC740110DLB Combi 740 Kit (110°) with Audio Entry Control Kit B</p> <p>F/KITC740110DLC Combi 740 Kit (110°) with Audio Entry Control Kit C</p> <p>F/KITC740110DLD Combi 740 Kit (110°) with Audio Entry Control Kit D</p> <p>F/KITC740110DLE Combi 740 Kit (110°) with Video Entry Control Kit E</p> <p>F/KITC740110DLF Combi 740 Kit (110°) with Video Entry Control Kit F</p> <p>F/KITC740110DLG Combi 740 Kit (110°) with Video Entry Control Kit G</p> <p>F/KITC740110DLH Combi 740 Kit (110°) with Video Entry Control Kit H</p> <p>Combi 740 Kit bundles - 175 degree opening</p> <p>F/KITC740175DLA Combi 740 Kit (175°) with Audio Entry Control Kit A</p> <p>F/KITC740175DLB Combi 740 Kit (175°) with Audio Entry Control Kit B</p> <p>F/KITC740175DLC Combi 740 Kit (175°) with Audio Entry Control Kit C</p> <p>F/KITC740175DLD Combi 740 Kit (175°) with Audio Entry Control Kit D</p> <p>F/KITC740175DLE Combi 740 Kit (175°) with Video Entry Control Kit E</p> <p>F/KITC740175DLF Combi 740 Kit (175°) with Video Entry Control Kit F</p> <p>F/KITC740175DLG Combi 740 Kit (175°) with Video Entry Control Kit G</p> <p>F/KITC740175DLH Combi 740 Kit (175°) with Video Entry Control Kit H</p> <p>For full details of the entry control kits, please see page 3.</p> | |
| Part No. | Description | | |
| F/KITC740110DL | Combi 740 Kit - 110 degrees | | |
| F/KITC740175DL | Combi 740 Kit - 175 degrees | | |
| F/A432T | Additional Transmitter - Astro 43/2TR | | |
| F/TRIFO11 | Additional Photocells (transmitter and receiver) - Trifo 11 | | |
| F/TRIFOPOST | Support Posts for Photocells - 0.5m high, base fixing | | |

BELOW GROUND KITS

COMBI 740 KIT with gate support enclosure

Below ground kit for double swing gates with a maximum width of 4.0m and 350kg per leaf

The Combi 740 Gate Support Kit comprises:

- 2 x Combi 740 all in one underground operators, with fixings and release shoes
- 2 x Reinforcement Collars
- 2 x Special Support Enclosures
- 1 x Electronic Control Unit
- 1 x Radio Receiver
- 2 x Hand-Held Transmitters
- 1 x Rod Aerial
- 1 x Pair of Safety Photocells

Single operator shown



| Max Gate Width | Gate Weight | Open Time | Locking Open | Locking Closed | Braking | Lock Required | Opening Deg |
|----------------|-------------|------------|--------------|----------------|---------|---------------|-------------|
| 2m/leaf | 350kg/leaf | 15 seconds | YES | YES | NO | NO | 110° |

In instances where it would not be practical to remove the gates for servicing or during new installations, the gates have to be fitted prior to the automation, this kit offers an excellent solution. The gates sit on a special shoe arrangement built into the enclosure, enabling the gate to be manually operated. At the time the automation is required, the hydraulic operator can be fitted inside the enclosure to engage with the bearing shaft and operate the gate in its automatic mode. Service and maintenance of the system is also easier with this arrangement as the gate can be left in place while the automation is worked on.

This kit is recommended for single residential properties and light commercial use. The kit can be fitted to both timber and metal gates, with a maximum opening of 4.0m and leaf weight of 350kg. Timber gates may require a strengthening plate on the bottom of the gate.

The gates hydraulically lock in both the open and closed position without the need for a lock.

The hydraulic power is set with adjustable pressure valves that are built into the operator. One pair of safety photocells is supplied. Additional safety devices can be added if required.

In the event of an emergency or power failure, the operator has a special release shoe enabling manual release from both sides of the gate.

The kit is easily integrated with access control, audio/video entry systems and other forms of control.

Physical gate stops must be installed in the open and closed position and a suitable soakaway provided.

NB: Please see pages 30-37 for access control and safety equipment.



| Part No. | Description |
|---------------|---|
| F/KITC740DLGS | Combi 740 Kit - with gate support enclosure |
| F/A432T | Additional Transmitter - Astro 43/2TR |
| F/TRIFO11 | Additional Photocells (transmitter and receiver) - Trifo 11 |
| F/TRIFOPOST | Support Posts for Photocells - 0.5m high, base fixing |

Bundles

| | |
|----------------|---|
| F/KITC740DLGSA | Combi 740 Kit (DLGS) with Audio Entry Control Kit A |
| F/KITC740DLGSB | Combi 740 Kit (DLGS) with Audio Entry Control Kit B |
| F/KITC740DLGSC | Combi 740 Kit (DLGS) with Audio Entry Control Kit C |
| F/KITC740DLGSD | Combi 740 Kit (DLGS) with Audio Entry Control Kit D |
| F/KITC740DLGSE | Combi 740 Kit (DLGS) with Video Entry Control Kit E |
| F/KITC740DLGSF | Combi 740 Kit (DLGS) with Video Entry Control Kit F |
| F/KITC740DLGSG | Combi 740 Kit (DLGS) with Video Entry Control Kit G |
| F/KITC740DLGSH | Combi 740 Kit (DLGS) with Video Entry Control Kit H |

For full details of the entry control kits, please see page 3.

BELOW GROUND KITS

COMBI 740 KIT with double locking and braking

Below ground kit for double swing gates with a maximum width of 4.0m and weight of 700kg

- The Combi 740 Double Locking and Braking Kit comprises:
- 2 x Combi 740 all-in-one underground operators
 - 1 x Electronic Control Unit
 - 1 x Radio Receiver
 - 2 x Hand-Held Transmitters
 - 1 x Rod Aerial
 - 1 x Pair of Safety Photocells



| Max Gate Width | Gate Weight | Open Time | Locking Open | Locking Closed | Braking | Lock Required | Opening Deg |
|----------------|-------------|-------------|--------------|----------------|---------|---------------|-------------|
| 2m/leaf | 700kg/leaf | 15 seconds* | YES | YES | YES | NO | 110° |

* Time will be affected with braking

This kit is recommended for single residential properties and low usage commercial and industrial sites. The Combi 740 Kit can be fitted to both timber and metal gates, with a maximum opening of 4.0m. Timber gates may require a strengthening plate on the bottom of the gate.

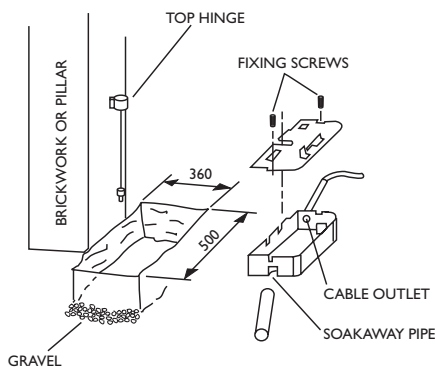
The kit has hydraulic locking in both the open and closed position without the need for a lock. It also has a built-in, adjustable braking system to slow the gate down during the last part of its open and close cycle. The hydraulic power is set with adjustable pressure valves that are built into the operator. One pair of safety photocells is supplied. Additional safety devices can be added if required.

In the event of an emergency or power failure, the operator has a special release shoe enabling manual release from both sides of the gate. The kit is easily integrated with access control, audio/video entry systems and other forms of control.

Physical gate stops must be installed in the open and closed position. A suitable soakaway must be provided.

NB: Please see pages 30-37 for access control and safety equipment.

Enclosure installation



| Part No. | Description |
|--------------|--|
| F/KITC740DLB | Combi 740 Kit (double locking and braking) |
| F/A432T | Additional Transmitter - Astro 43/2TR |
| F/TRIFOLI | Additional Photocells (transmitter and receiver) - Trifo I I |
| F/TRIFOPOST | Support Posts for Photocells - 0.5m high, base fixing |

Bundles

| | |
|---------------|--|
| F/KITC740DLBA | Combi 740 Kit (DLB) with Audio Entry Control Kit A |
| F/KITC740DLBB | Combi 740 Kit (DLB) with Audio Entry Control Kit B |
| F/KITC740DLBC | Combi 740 Kit (DLB) with Audio Entry Control Kit C |
| F/KITC740DLBD | Combi 740 Kit (DLB) with Audio Entry Control Kit D |
| F/KITC740DLBE | Combi 740 Kit (DLB) with Video Entry Control Kit E |
| F/KITC740DLBF | Combi 740 Kit (DLB) with Video Entry Control Kit F |
| F/KITC740DLBG | Combi 740 Kit (DLB) with Video Entry Control Kit G |
| F/KITC740DLBH | Combi 740 Kit (DLB) with Video Entry Control Kit H |

For full details of the entry control kits, please see page 3.

SLIDING GATE KIT

GIRRI 130 KIT



Sliding gate kit for a maximum weight of 400kg

The Girri 130 Kit comprises:

- 1 x Girri 130 Operator with Built-in Control Unit
- 1 x Radio Receiver
- 2 x Hand-Held Transmitters
- 1 x Rod Aerial
- 1 x Pair of Safety Photocells
- 1 x Flashing Lamp
- 5 x 1m Lengths of Nylon Rack with Fixings

| Max Gate Width | Gate Weight | Open Time | Locking Open | Locking Closed | Braking | Lock Required |
|----------------|-------------|-----------|--------------|----------------|---------|---------------|
| 5m | 400kg | 10m/min | YES | YES | NO | NO |

This kit is recommended for single residential properties and low usage commercial and industrial sites. The Girri 130 Kit can be fitted to both timber and metal gates.

The gate is secured in the closed position with the non-reversible action of the motor drive gear arrangement.

The operating force is set using the adjustable, electronic torque control device that is built into the operator. One pair of safety photocells is supplied. Additional safety devices can be added.

In the event of an emergency, the locked cover on the operator is removed and a lever disengages the motor drive. A safety switch isolates the mains voltage when the cover is removed.

A pedestrian function on the controller will open the gate a suitable distance for a person to walk through. A separate keypad or other form of access is required for this function.

The kit is easily integrated with access control, audio/video entry systems and other forms of control.

NB: Please see pages 30-37 for access control and safety equipment.

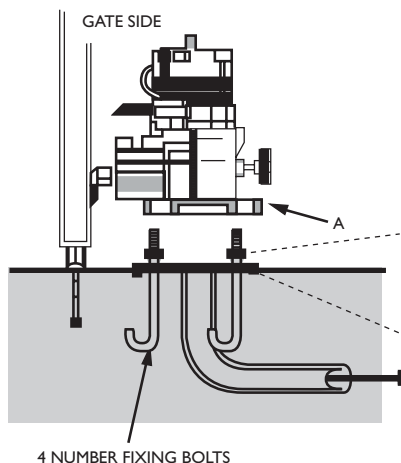


| Part No. | Description |
|----------------|---|
| F/KITGIRRI 130 | Girri 130 Kit |
| F/A432T | Additional Transmitter - Astro 43/2TR |
| F/TRIFO 11 | Additional Photocells (transmitter and receiver) - Trifo 11 |
| F/TRIFOPOST | Support Posts for Photocells - 0.5m high, base fixing |

Bundles

| | |
|--|--|
| F/KITGIRRI 130A | Girri 130 Kit with Audio Entry Control Kit A |
| F/KITGIRRI 130B | Girri 130 Kit with Audio Entry Control Kit B |
| F/KITGIRRI 130C | Girri 130 Kit with Audio Entry Control Kit C |
| F/KITGIRRI 130D | Girri 130 Kit with Audio Entry Control Kit D |
| F/KITGIRRI 130E | Girri 130 Kit with Video Entry Control Kit E |
| F/KITGIRRI 130F | Girri 130 Kit with Video Entry Control Kit F |
| F/KITGIRRI 130G | Girri 130 Kit with Video Entry Control Kit G |
| F/KITGIRRI 130H | Girri 130 Kit with Video Entry Control Kit H |
| For full details of the entry control kits, please see page 3. | |

Installation arrangement



ON-THE-GATE OPERATORS

HINDI 880

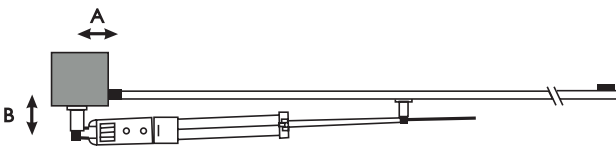


'On-the-gate' operator for double swing gates up to 5.0m each leaf

The Hindi 880 can be used for the automation of both existing and new gates in single property residential and light commercial applications. Various options are available to suit the type of gate and automation required. Please refer to the chart below or contact our customer support team, who will be able to advise you on the different options.

All operators come complete with fittings and are oil filled.

Set up measurements



DL - Double Locking - Gates are hydraulically locked in the open and closed position. No lock is required up to a maximum of 2.3m for a standard stroke operator or 3m for a long stroke operator. This feature is useful on applications where the gates are open for lengthy periods and subject to windy conditions.

NL - Non Locking - For gates over the above specification, which are generally kept in the closed position, it is advisable to use the standard or long stroke operator with non locking action, and secure the gate with an electric lock or maglock.

B - This is a built-in, adjustable braking system to slow the gates down during the last part of its opening and closing cycle. It is recommended where the noise of the gate is an issue and where a maglock is installed for extra security.

L - Indicates that a Long Stroke piston is used. This is normally used on wider gates.

PL & PNL - 'P' indicates that the operator is for use on a pedestrian gate. Locking and Non Locking options are shown.

| | A | B |
|-------------|-------|-------|
| Standard | 130mm | 130mm |
| Long Stroke | 210mm | 180mm |
| Pedestrian | 60mm | 80mm |

| Part No | Model | Max Gate Width | Gate Weight | Open Time | Locking Open | Locking Closed | Braking | Lock Required | Long Stroke | Opening Deg |
|--------------|--------------------------|----------------|-------------|-------------|--------------|----------------|---------|---------------|-------------|-------------|
| F/H880DL | Hindi 880 DL | 2.3m / leaf | 180kg | 24 seconds | YES | YES | NO | NO | N/A | 90° |
| F/H880DLB | Hindi 880 DLB | 2.3m / leaf | 180kg | 24 seconds* | YES | YES | YES | NO | N/A | 90° |
| F/H880DL/LS | Hindi 880 LDL | 3m / leaf | 180kg | 27 seconds | YES | YES | NO | NO | YES | 90° |
| F/H880DLB/LS | Hindi 880 LDLB | 3m / leaf | 180kg | 27 seconds* | YES | YES | YES | NO | YES | 90° |
| F/H880NL | Hindi 880 NL | 3.5m / leaf | 180kg | 24 seconds | NO | NO | NO | YES | N/A | 90° |
| F/H880NL/LS | Hindi 880 LNL | 5m / leaf | 180kg | 27 seconds | NO | NO | NO | YES | YES | 90° |
| F/H880NLB/LS | Hindi 880 LNLB | 5m / leaf | 180kg | 27 seconds* | NO | NO | YES | YES | YES | 90° |
| F/H880PSL | Hindi 880 PL (Ped Gate) | 1 - 1.8m | 180kg | 10 seconds | NO | YES | NO | NO | N/A | 90° |
| F/H880PNL | Hindi 880 PNL (Ped Gate) | 1 - 2m | 180kg | 10 seconds | NO | NO | NO | YES | N/A | 90° |

* Time will be affected with braking

Each pair of operators requires a control board, for which we recommend the ELPRO 23.

The ELPRO 23 comes with all the necessary features to interface with any access control and safety requirements. One control unit will operate up to 2 Hindi 880 operators.

A manual release allows the gates to be opened in the event of an emergency or power failure (not required on non-locking operators).

These operators are easily integrated with access control, audio/video entry systems and other forms of control.

Physical gate stops must be installed in the open and closed position.

NB: Please see pages 30-37 for access control and safety equipment and page 29 for electric and magnetic locks.



ON-THE-GATE OPERATORS

MEC 800

Heavy duty 'on-the-gate' operator for large wind-affected swing gates up to 1,800kg each leaf

F/M800



F/M70080/6 or F/M70080/12

The MEC 800 on-the-gate system is designed for large, heavy and wind-affected gates and doors. Its heavy duty air-cooled motor pump makes it ideal for arduous and frequent duty cycles on gates weighing up to 1,800kg. If the gates are wind-affected, particularly heavy or wide, then two operators per leaf may be required. Please refer to the chart below or contact our customer support team, who will be able to advise you on the different options.

DL - Double Locking - Gates are hydraulically locked in the open and closed position. Refer to the chart below for gate specification detail. This feature is useful on applications where the gates are open for lengthy periods and subject to windy conditions.

B - Braking - This is a built-in, adjustable braking system to slow the gates down during the last part of its opening and closing cycle. It is recommended where the noise of the gate closing and opening is an issue and where a maglock is installed for extra security.

Long Stroke - The longer piston increases the size of gate leaf that can be automated due to its length of travel.

| Part No | Model | Pump Type | Max Gate Width | Gate Weight | Open Time | Locking Open | Locking Closed | Braking | Lock Required | Long Stroke | Opening Deg |
|------------------|--------------------------|-----------|----------------|-------------|-----------|--------------|----------------|---------|---------------|-------------|-------------|
| 1 x F/M800 | MEC 800 Standard Stroke | P6 | 2.5m | 800kg | 24 Secs | YES | YES | NO | NO | NO | 90° |
| 2 x F/M800 | MEC 800 Standard Stroke | P12 | 3.5 m | 1,800kg | 24 Secs | YES | YES | NO | YES over 3.0m | NO | 90° |
| 1 x F/M800/LS | MEC 800 Long Stroke | P12 | 3.0 m | 800kg | 18 Secs | YES | YES | NO | NO | YES | 90° |
| 2 x F/M800/LS | MEC 800 Long Stroke | P12 | 5.0 m | 1,800kg | 31 Secs | YES | YES | NO | YES over 3.0m | YES | 90° |
| 1 x F/M800DLB | MEC 800B Standard Stroke | P6 | 2.5m | 800kg | 24 Secs* | YES | YES | YES | NO | NO | 90° |
| 1 x F/M800DLB/LS | MEC 800B Long Stroke | P12 | 3.0 m | 800kg | 18 Secs* | YES | YES | YES | NO | YES | 90° |

* Time will be affected with braking

The operators detailed above, require a pump, enclosure and control board. Please see the Accessories below or call our customer support team, who can advise on the options for your gate application.

NB: Please see pages 30-37 for access control and safety equipment and page 29 for electric and magnetic locks.

| Part No. | Description |
|---------------------------|--|
| F/M70080/6 or F/M70080/12 | MEC 700/80 Hydraulic Pump Unit - AIR COOLED. High duty cycle application. DL - Double hydraulic locking. Heavy duty pump operation. Manual release. Complete with fixings and oil. Models P6 and P12 provide a gate opening time from 12 to 31 seconds subject to the operator piston stroke and installation set-up. It is advisable that our customer support team are contacted for the choice of pump model. |
| F/MEC700/80 | MEC 700/80 Pump Unit Enclosure - With security lock, for surface and recess mounting. Dimensions - 450h x 350w x 250d (mm). |
| F/ELPRO23NC | Electronic Control Unit - ELPRO 23 - Complete with the necessary features to interface with any access and safety control requirement. |
| F/4WCBP | 4 - way pipe connection block with fittings, when 1 or more operators per gate leaf are being used. |
| F/6WCBP | 6 - way pipe connection block with fittings, when 2 operators per gate leaf are being used. |
| F/FRR | Flow rate regulator with fittings. Required when the pipe runs between each pump and the operators are of uneven distance. It is introduced into the shorter pipe run and can be easily adjusted to ensure both gates open and close together. This regulator should only be used with gates not having a rebate. |
| F/PIPE10M | Copper Pipe - 10m length. |
| F/HYDROIL2 | Additional Hydraulic Oil - 2 Litres. |
| FSP/HFT0.5 | Hydraulic Flexible Pipe - 0.5m - 2 pipes required for each operator. |

Automatic and External Manual Release kits are available on request.

Physical gate stops must be installed in the open and closed position.



APROLI 280

Cranked arm operator for swing gates mounted on large pillars with gate weight up to 300kg

Single Phase Supply

The Aproli 280 electro hydraulic operator comes complete with a cranked arm. Ideally suited for swing gate applications where the gate is hanging from large pillars. A maximum distance of 450mm between the gate hinge and outer face of the pillar can be achieved i.e. 900mm thick pillars. Using this operator eliminates the need of removing brickwork to obtain the correct geometry, as with some conventional piston type 'on-the-gate' operators. Ideal for gates and pillars of special architectural value. Maximum gate weight 300kg.

DL - Double Locking - This gives a double hydraulic locking action to the gate in its open and closed positions, preventing entry into the property without the need to fit an electric or magnetic lock and holding the gate in the open position at required times of the day, without it being moved by wind conditions. Depending on the style of gate, it is recommended that the gate length does not exceed 2.0m when using the standard unit - up to 3.0m when using the F/A280SDL.

NL – Non Locking - For gates over 2.0m length, which are generally kept in the closed position, it is advisable to use the operator with non-locking action and secure the gate using an electric lock or maglock. The maximum gate length recommended using this option is 3.0m.

Our customer support team will be able to advise you on the options required for your gate application.

Each operator comes complete with its cranked arm.

Gate stops required in open and closed position.



| Part No. | Description |
|-------------|---|
| F/A280DL | Aproli 280DL – double locking. Opening time 15 seconds. Suitable for gates up to 1.8m weighing up to 100kg. |
| F/A280DL/FR | Aproli 280DL – double locking. Opening time 15 seconds. Fitted flow rate regulator provides constant speed of the gate in wind conditions. Suitable for gates up to 1.8m weighing up to 100kg. |
| F/A280NL | Aproli 280NL – non locking. Opening time 15 seconds. Suitable for gates up to 2.0m weighing up to 300kg. |
| F/A280SDL | Aproli 280DL – double locking. Opening time 15 seconds. Heavy-duty model for large gates up to 3.0m and weighing 300kg. Cranked arm is steel. In this instance an electric lock is recommended if the gate is larger than 2.0m. |
| | With model F/A280SDL please specify right or left hand operation when viewed from inside the property. |

| Part No. | Description |
|-----------|---|
| F/ELPRO23 | Electronic Control Unit - Elpro 23 This control unit is recommended for use with the above operators. It comes with all the necessary features to interface with any access and safety control requirements. One control unit will operate up to two Aproli 280 operators. |
| | All in-filled gates are to be fitted with an electric or magnetic lock and these can be found on page 29. NB: Please see pages 30-37 for access control and safety equipment. |

BELOW GROUND GATE OPERATORS

COMBI 740



'All-in-one' below ground operator for gates up to 3.0m each leaf

The Combi 740 operator is suitable for use in residential and light duty commercial applications. The unit includes the pump and jack in the enclosure. No pump housing or piping is visible above the ground to detract from the appearance of the gate and posts. The system has a special release in the event of power failure or emergency. Various options are available to suit the type of gate and automation required.

Please refer to the chart below or contact our customer support team, who will be able to advise you on the different options.

Each operator comes complete with the enclosure, oil filled pump motor, jack and release shoe.

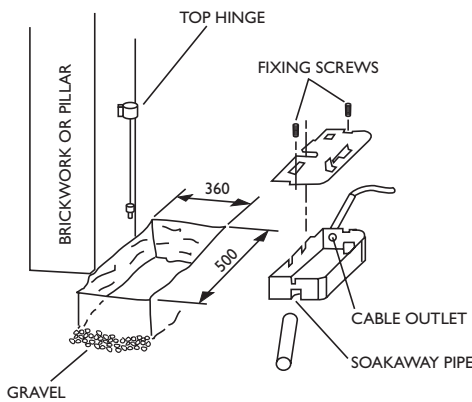
Enclosure Dimensions - 450mm H x 350mm W x 250mm D

DL - Double Locking - Gates are hydraulically locked in the open and closed position. No lock is required up to a maximum of 2.0m each leaf. This feature is useful on applications where the gates are open for lengthy periods and subject to windy conditions.

NL - Non Locking - For gates over 2.0m each leaf, which are generally kept in the closed position, it is advisable to use the operator with non locking action, and secure the gate with an electric lock or maglock. The maximum gate length recommended using this option is 3.0m.

B - This is a built-in, adjustable braking system to slow the gates down during the last part of its opening and closing cycle. It is recommended where the noise of the gate closing and opening is an issue and where a maglock is installed for extra security.

Enclosure installation



| Part No | Model | Max Gate Width | Gate Weight | Open Time | Locking Open | Locking Closed | Braking | Lock Required | Opening Deg |
|--------------|---------------|----------------|--------------|-------------|--------------|----------------|---------|---------------|-------------|
| F/C740DLI10 | Combi 740 DL | 2m / leaf | 700kg / leaf | 15 seconds | YES | YES | NO | NO | 110° |
| F/C740DLI75 | Combi 740 DL | 2m / leaf | 700kg / leaf | 24 seconds | YES | YES | NO | NO | 175° |
| F/C740DLBI10 | Combi 740 DLB | 2m / leaf | 700kg / leaf | 15 seconds* | YES | YES | YES | NO | 110° |
| F/C740DLBI75 | Combi 740 DLB | 2m / leaf | 700kg / leaf | 24 seconds* | YES | YES | YES | NO | 175° |
| F/C740NLI10 | Combi 740 NL | 3m / leaf | 700kg / leaf | 15 seconds | NO | NO | NO | YES | 110° |
| F/C740NLI75 | Combi 740 NL | 3m / leaf | 700kg / leaf | 24 seconds | NO | NO | NO | YES | 175° |
| F/C740NLBI10 | Combi 740 NLB | 3m / leaf | 700kg / leaf | 15 seconds* | NO | NO | YES | YES | 110° |
| F/C740NLBI75 | Combi 740 NLB | 3m / leaf | 700kg / leaf | 24 seconds* | NO | NO | YES | YES | 175° |

* Time will be affected with braking

Each of the above operators requires a control board, for which we recommend the Elpro 23.

The Elpro 23 comes with all the necessary features to interface with any access control and safety equipment. One control unit will operate up to 2 Combi 740 operators.

Physical gate stops must be installed in the open and closed position. A suitable soakaway must be provided.

Accessories

| Part No. | Description |
|----------|--|
| F/CMRK | Additional Release Key |
| F/OASGA | Off-axis sliding arm for use with Combi 740 system. It enables existing gates to be automated to an opening of 90 degrees without having to alter the existing gate hinge arrangement. |

NB: Please see pages 28-35 for access control and safety equipment and page 27 for electric and magnetic locks. For high duty, multi-user residential developments and industrial applications, our MEC 700 underground operator is recommended. For special underground applications, take a look at our Drive 700 systems. The hydraulic motor pump is mounted above ground.

Combi 740 drives and shoes are handed: Sx = left - view from the inside
Dx = right - view from the inside

BELOW GROUND GATE OPERATORS

DRIVE 700

Electro hydraulic below ground operator for special applications involving residential swing gates up to 3.5m each leaf



Single Phase Supply

The Drive 700 below ground system provides an alternative to the Combi 740 'all-in-one' operator for special applications, such as driveways where drainage is a problem. The Drive 700 system has its hydraulic motor pump mounted above ground.

- DL** - Double Locking - This gives a double hydraulic locking action to the gate in its open and closed positions, preventing entry into the property without the need to fit an electric or magnetic lock and holding the gate in the open position at required times of the day without it being moved by wind conditions. Depending on the style of gate, it is recommended that the gate length does not exceed 2.0m when using this option.
- NL** - Non Locking - For gates over 2.0m length, which are generally kept in the closed position, it is advisable to use the pump with non locking action and secure the gate using an electric lock or maglock. The maximum gate length recommended using this option is 3.5m. Please advise if non-locking is required.
- B** - This is a built-in adjustable braking system to slow the gate down during the last part of its opening and closing cycle. Its use is recommended where the noise of the gate closing and opening is an issue and where a magnetic lock is installed for added entry security.

Our customer support team will be able to advise you on the options required for your gate application.

Each system comprises a hydraulic motor pump and underground jack with mounting base.

Physical gate stops must be installed in the open and closed position. A suitable soakaway is recommended.



| Part No. | Part No. Includes | | Max Gate Width | Gate Weight | Opening Time | Locking Open | Locking Closed | Braking | Opening Degree |
|-----------|-------------------|--------------|----------------|-------------|--------------|--------------|----------------|---------|----------------|
| | Pump Unit | Operator | | | | | | | |
| F/D710DL | F/D700PM | F/D700110DL | 2m/leaf | 700kg | 15 secs | YES | YES | NO | 110° |
| F/D775DL | F/D700PM | F/D700175DL | 2m/leaf | 700kg | 25 secs | YES | YES | NO | 175° |
| F/D710DLB | F/D700PM | F/D700110DLB | 2m/leaf | 700kg | 15 secs* | YES | YES | YES | 110° |
| F/D775DLB | F/D700PM | F/D700175DLB | 2m/leaf | 700kg | 25 secs* | YES | YES | YES | 175° |

*Time will be affected with Braking

NB: The Drive 700 system can be supplied with non-hydraulic locking (NL) in the closed position, enabling gates up to 3.5m each leaf to be automated. An electric lock or maglock will be required in this instance.

F/ELPRO23 | Electronic Control Unit – Elpro 23
Recommended for use with the above systems. It comes with all the necessary features to interface with any access and safety control requirements. One control unit will operate up to 2 Drive 700 operators.

NB: Please see pages 30-37 for access control and safety equipment. Please see pages 29 for a choice of electric and magnetic locks.

Operator Accessories

The above system prices do not include any copper piping.

| Part No. | Description |
|------------|---|
| F/PIPE10M | Copper Pipe - 10m length. |
| F/HYDROIL2 | Hydraulic Oil - 2 litres. |
| F/OASGA | Off-axis sliding guide arm for use with Drive 700 system. It enables existing gates to be automated to an opening of 90° maximum without having to alter existing gate hinge arrangement. |
| F/D700P | Hydraulic motor pump enclosure - with lock. |
| F/FRR | For infilled gates and those that are wind-affected, a flow rate regulator can be added to the operator to give a smooth moving action of the gate in high wind conditions. |

BELOW GROUND GATE OPERATORS

MEC 700



Heavy duty below ground system for single and double swing gates up to 3.5m each leaf

The MEC 700 below ground system is provided for high duty applications in both residential and industrial situations. The hydraulic pump is air-cooled with heavy duty operation and is used with the Drive 700 underground jack range. Various options are available to suit the type of gate and automation required.

Please refer to the chart below or contact our customer support team, who will be able to advise you on the different options.

Each system comprises a hydraulic pump and enclosure, underground jack with mounting base and oil.

Pump Enclosure Dimensions - 450mm H x 350mm W x 250mm D

DL - Double Locking - Gates are hydraulically locked in the open and closed position. No lock is required up to a maximum of 2.0m each leaf. This feature is useful on applications where the gates are open for lengthy periods and subject to windy conditions.

NL - Non Locking - For gates over 2.0m each leaf, which are generally kept in the closed position, it is advisable to use the standard or long stroke operator with non locking action, and secure the gate with an electric lock or maglock. The maximum gate length recommended using this option is 3.5m (see note below).

B - This is a built-in, adjustable braking system to slow the gates down during the last part of its opening and closing cycle. It is recommended where the noise of the gate closing and opening is an issue and where a maglock is installed for extra security.

| Part No. | Part No. Includes | | | | Max Gate Width | Gate Weight | Opening Time | Locking Open | Locking Closed | Braking | Opening Degree |
|--------------|-------------------|--------------|--------------|---------------|----------------|-------------|--------------|--------------|----------------|---------|----------------|
| | Pump Unit | Operator | Pump Housing | Hydraulic Oil | | | | | | | |
| F/M700110DL | F/M70080/3 | F/D700110DL | F/MEC700/80 | F/HYDROIL2 | 2m/leaf | 700kg | 15 secs | YES | YES | NO | 110° |
| F/M700175DL | F/M70080/3 | F/D700175DL | F/MEC700/80 | F/HYDROIL2 | 2m/leaf | 700kg | 25 secs | YES | YES | NO | 175° |
| F/M700110DLB | F/M70080/3 | F/D700110DLB | F/MEC700/80 | F/HYDROIL2 | 2m/leaf | 700kg | 15 secs* | YES | YES | YES | 110° |
| F/M700175DLB | F/M70080/3 | F/D700175DLB | F/MEC700/80 | F/HYDROIL2 | 2m/leaf | 700kg | 25 secs* | YES | YES | YES | 175° |

* Time will be affected with braking

NB: The MEC 700 system can be supplied with non-hydraulic locking (NL) in the closed position, enabling gates up to 3.5m each leaf to be automated. An electric lock or maglock will be required in this instance.

The above systems can be supplied with non-hydraulic locking (NL) in the closed position, enabling gates up to 3.5m each leaf to be automated. In this instance it is recommended that an electric lock or maglock is used. Each of the above operators requires a control board, for which we recommend the Elpro 23/NC. The Elpro 23/NC comes with all the necessary features to interface with any access control and safety requirements. One control unit will operate up to 2 x MEC 700 operators.

A hydraulic release allows the gates to be opened in the event of an emergency or power failure.

Physical gate stops must be installed in the open and closed position.

| Accessories | |
|--------------|--|
| Part No. | Description |
| F/PIPE10M | Copper Pipe - 10m length. |
| F/HYDROIL2 | Hydraulic Oil - 2 litres. |
| F/OASGA | Off-axis sliding arm for use with MEC 700 system. It enables existing gates to be automated to an opening of 90 degrees without having to alter existing gate hinge arrangement. |
| F/ELPRO23/NC | Electronic Control Unit – Elpro 23/NC Recommended for use with the above systems. It comes with all the necessary features to interface with any access and safety control requirements. One control unit will operate up to 2 MEC 700 operators. |

NB: Please see pages 30-37 for access control and safety equipment. Please see page 29 for a choice of electric and magnetic locks.

SLIDING GATE OPERATORS

NYOTA 115

Electromechanical operator for sliding gates weighing up to 800kg

| Part No | Description | Gate Weight | Open Time Open | Locking Closed |
|------------|--------------------|-------------|-------------------|-------------------|
| F/NI15/0.5 | Nyota 115 - 0.5 HP | 500kg | 9.5m/min | YES |
| F/NI15/1 | Nyota 115 - 1.0 HP | 800kg | 9.5m/min | YES |

This system is recommended for single residential properties and light commercial use. The Nyota 115 requires a single phase supply, is self locking through its geared motor and is equipped with an adjustable clutch system.

The operator can be disengaged in an emergency or power failure situation. The on board control unit provides the inputs/outputs required to integrate with access control and safety equipment. See pages 30-37.

The housing incorporates a safety switch that cuts off the supply voltage, when the lid is removed.

A non locking, reversing model can also be supplied.

| Part No. | Description |
|----------|--|
| F/PICP | Plug-in card that provides partial opening of the sliding gate for pedestrian use. |



MEC 200

Electro-mechanical operator for sliding gates weighing up to 1,250kg

| Part No | Description | Supply | Gate Weight Open | Open Time Closed | Locking |
|-----------|----------------|------------------|---------------------|---------------------|---------|
| F/M2001.0 | MEC 200 1.0 HP | Single - 220/240 | 800kg | 9.5m/min | YES |
| F/M2001.5 | MEC 200 1.5 HP | Three - 380/415 | 1250kg | 9.5m/min | YES |



The unit is available for single or 3 phase supply depending on the weight of the gates. The drives have a self locking geared motor with air cooling and built-in electro-magnetic brake. The unit drives through an adjustable clutch and features an emergency release and built-in limit switches.

A remote electronic control unit (Elpro 10 supplied) provides the closing time adjustment, 24V output LED function indicators and a safety cut-off switch.

For heavy duty applications and gates in excess of 5.0m, the 3 phase model is recommended, along with Zinc Racking (F/HDZR).

A gate speed of 12m/min is available for both MEC 200 models on request, however, it should be noted that this will reduce the driving capacity by 20%.

For bi-parting gates, use the Elpro 14 control unit (F/ELPRO14) which is available for both single and 3 phase models. Only 1 control unit is needed to operate both gates.

Where a sliding gate needs to be partially opened for pedestrian access, the plug-in card (F/PICP) can be fitted to the electronic control unit for both the single and three phase models.

See pages 30-37 for access control and safety equipment.

SLIDING GATE OPERATORS

FIBO 400

Electro-mechanical operator for sliding gates weighing up to 800kg

| Part No. | Description | Supply | Gate Weight | Open Time | Locking Open | Locking Closed |
|-------------|-----------------|---------------|-------------|-----------|--------------|----------------|
| F/F400/7289 | Fibo 400 3.0 HP | Three-380/415 | 4,000kg | 10.2m/min | YES | YES |



The unit requires a 3 phase supply. The drives have a self-locking geared motor with air cooling and built-in limit switches to cut off the power at any gate position. The unit drive is torque controlled through a clutch system directly connected to the drive shaft. A built-in electronic control board (Elpro 220) provides closing timer 24V output, LED input status indication and is easily integrated with any access control and safety equipment.

When using the Fibo 400 operator, it is recommended that the Zinc rack (F/HDZR) is used.

See pages 30-37 for access control and safety equipment



SLIDING GATE ACCESSORIES for Nyota 115, MEC 200 and Fibo 400

| Part No | Description |
|-------------|---|
| F/PICP | Pedestrian access plug-in card |
| F/HDZR | Zinc rack 22 x 22mm for heavy duty applications - welded directly to gate. 2.0m lengths. Priced per metre |
| F/ROLLER120 | Lower guide wheel 'U' groove 120mm diameter. Loading capacity 400kg |
| F/ROLLER160 | Lower guide wheel 'U' groove 160mm diameter. Loading capacity 500kg |
| F/ROLLER200 | Lower guide wheel 'U' groove 200mm diameter. Loading capacity 500kg |
| F/ROLLER30 | Upper guide nylon roller - 30mm diameter |
| F/ROLLER40 | Upper guide nylon roller - 40mm diameter |
| F/GSTOP | Opening stop |
| F/RACK | Zinc rack with fixings slots. Supplied in 1.0m lengths |
| F/RACKFIX | Fixings for F/RACK |

ACCESSORIES

ELECTRIC LOCKS & LATCHES

For fail-secure operation on power failure. Lock remains in secured position.

| Part No. | Description |
|----------|---|
| F/LOCKDS | Electric lock with double sided barrel (12V AC) |
| F/LOCKSS | Electric lock with single sided barrel (12V AC) |
| F/LOCKSP | Floor striker for vertical mounted electric lock and horizontal locking of farm gates |
| F/WCVL | Wing clamp for vertical locking gates where electric lock is horizontally mounted |
| F/SBVL | Sliding bolt for vertical locking of double gates where electric lock is horizontally mounted |

Please state if electric lock is to be horizontal for selection of cover plate.

NB: An electric lock is available for outward opening gates.



Single Barrel Lock - F/LOCKSS



Floor Striker - F/LOCKSP



Wing Clamp - F/WCVL



Sliding Bolt - F/SBVL

MAGNETIC LOCKS

For fail-safe operation on power failure.

| Part No. | Description |
|-----------|---|
| EM-GATE/F | Electro magnetic lock. Externally rated. 24V DC – 250mA Holding force 1300lb 205mm (L) x 65mm (H) x 40mm (D) Finish – brushed stainless steel |
| EM/BR026 | Z + L brackets complete with fittings for fixing lock or armature. For use with GGL1200 model above |

Available with monitoring to give lock status.

NB: It is important that only an electro magnet lock with anti-surge protection is used with the electronic control units.

We recommend that for safety purposes there should be a method to isolate the magnetic lock, e.g. break glass unit or key switch.



EM-GATE/F

ACCESSORIES

SAFETY EQUIPMENT

Photocells

| Part No. | Description |
|-----------|---|
| F/TRIFO11 | Trifo 11 Photocell (receiver and transmitter) – surface mounted – self-aligning beam – max range 6m. |
| F/POLO44 | Polo 44 Photocell (receiver and transmitter) – semi-flush mounting only – max range 12m. Surface mounting from the housings shown on page 31. |

Loop Detector

| Part No. | Description |
|----------|--|
| F/LOOP | Ground loop detector card with cable harness – for use with Elpro electronic control unit. |
| F/LCABLE | Cable loop - 100m length |

Rubber Edge for Sliding Gates

| Part No. | Description |
|----------|--|
| F/PNSE | Pneumatic rubber safety edge – 70x40mm – 2.0m length |
| F/PNSELP | Pneumatic rubber safety edge – low profile – 30 x 25mm – 2.0m length |
| F/PS | Pressure switch with case and fastening brackets for use with 'fixed' safety edge |
| F/RCPS | Pressure switch – with remote control for 'moving' pneumatic rubber safety edge |
| F/2077 | Safety-conforming, mechanically operated wire strip rubber safety profile to cut off power supply by mechanical wire – 2.0m length |
| F/2079 | Safety-conforming, mechanically operated wire strip rubber safety profile to cut off power supply by mechanical wire – 3.0m length |
| F/RCM | Radio link to suit mechanical safety edge |

Flashing Lamp

| Part No. | Description |
|----------|-----------------------------------|
| F/MIRI4 | Miri 4 - flashing indication lamp |

Traffic Light Option

| Part No. | Description |
|----------|--|
| F/TLH100 | Traffic light head - red/green, 100mm diameter lens with fixing bracket for post or surface mounting |

Polo 44

Trifo 11



SAFETY EQUIPMENT

Support Posts and Mounting Boxes

| Part No. | Description |
|-------------|--|
| F/TRIFOPOST | Support post for F/Trifo 11 photocells – 0.5m height – base plate fixing only (pair) |
| F/4454 | Support post for F/Polo44 photocells and F/Prit19 key switch – 0.54m height – supplied without base plate (pair) |
| F/4464 | Support post for F/Polo44 and F/Prit19 – 0.75m height – supplied without base plate (pair) |
| F/4474 | Support post for F/Polo44 and F/Prit19 – 1.20m height – supplied without base plate (pair) |
| F/4484 | Support post for dual mounting of F/Polo44 and F/Prit19 – 1.20m height – supplied without base plate (pair) |
| F/4421 | Base plate for above support posts |
| F/4486 | Zinc coated mounting box for F/Polo44 and F/Prit19 |
| F/4487 | Nylon mounting box for F/Polo44 and F/Prit19 |
| F/4488 | Nylon case – recess mounting for F/Polo44 and F/Prit19 |
| F/4489 | Nylon case – surface mounting for F/Polo44 and F/Prit19 |
| F/3340 | Support post with fixing base plate (150x100mm) for F/Edi60 digital keypad and F/Mapul68 card reader. 0.5m height |
| F/3342 | Support post for cement fixing for F/Edi60 digital keypad and F/Mapul68 card reader. 0.75m height |
| F/3344 | Support post with fixing base plate (150x100mm) for for F/Edi60 digital keypad and F/Mapul68 card reader. 1.20m height |
| F/3348 | Support post with fixing base plate (150x100mm) for dual mounting for F/Edi60 digital keypad and F/Mapul68 card reader. 1.20m height |
| F/3345 | Support post for cement fixing for part F/Edi60 and F/Mapul68 – 1.20m height |
| F/3343 | Steel box for surface mounting of part F/Edi60 and F/Mapul68 |

Ensure that all accessories used with our products are CE approved.

Support post for Trifo 11 (F/TRIFOPOST)



Support Posts



Mounting Boxes



ACCESS CONTROL

|  | <p>Push Button</p> <table border="1"> <thead> <tr> <th>Part No.</th> <th>Description</th> </tr> </thead> <tbody> <tr> <td>F/PBS</td> <td>Stainless steel push button - flush or surface mounting. Cannot be fitted to support posts and housings listed on page 31.</td> </tr> <tr> <td>F/PULIN</td> <td>Pulin 3 - 3 push button - table top free mounting with LED at each button.</td> </tr> <tr> <td>F/TREPU25</td> <td>Trepu 25 - 3 push button - surface mounting - open/stop/close.</td> </tr> </tbody> </table> | Part No. | Description | F/PBS | Stainless steel push button - flush or surface mounting. Cannot be fitted to support posts and housings listed on page 31. | F/PULIN | Pulin 3 - 3 push button - table top free mounting with LED at each button. | F/TREPU25 | Trepu 25 - 3 push button - surface mounting - open/stop/close. | | | | | | | | | |
|---|--|------------------------------|-------------|--------------|---|------------|---|------------|--|-------------|---------------------|---|----------|-------|---|-----------|-------|---|
| Part No. | Description | | | | | | | | | | | | | | | | | |
| F/PBS | Stainless steel push button - flush or surface mounting. Cannot be fitted to support posts and housings listed on page 31. | | | | | | | | | | | | | | | | | |
| F/PULIN | Pulin 3 - 3 push button - table top free mounting with LED at each button. | | | | | | | | | | | | | | | | | |
| F/TREPU25 | Trepu 25 - 3 push button - surface mounting - open/stop/close. | | | | | | | | | | | | | | | | | |
| <p>F/PRIT19</p> | <p>Key Switch</p> | | | | | | | | | | | | | | | | | |
|  | <table border="1"> <thead> <tr> <th>Part No.</th> <th>Description</th> </tr> </thead> <tbody> <tr> <td>F/PRIT19</td> <td>Prit 19 - Key switch with STOP button - flush mounting - open/close. Surface mounting available from mounting boxes shown on page 31.</td> </tr> <tr> <td>F/9830115</td> <td>Spare key for Prit 19 - blank</td> </tr> </tbody> </table> | Part No. | Description | F/PRIT19 | Prit 19 - Key switch with STOP button - flush mounting - open/close. Surface mounting available from mounting boxes shown on page 31. | F/9830115 | Spare key for Prit 19 - blank | | | | | | | | | | | |
| Part No. | Description | | | | | | | | | | | | | | | | | |
| F/PRIT19 | Prit 19 - Key switch with STOP button - flush mounting - open/close. Surface mounting available from mounting boxes shown on page 31. | | | | | | | | | | | | | | | | | |
| F/9830115 | Spare key for Prit 19 - blank | | | | | | | | | | | | | | | | | |
| <p>F/EDI60</p> | <p>Digital Keypad (Recodeable)</p> | | | | | | | | | | | | | | | | | |
|  | <table border="1"> <thead> <tr> <th>Part No.</th> <th>Description</th> </tr> </thead> <tbody> <tr> <td>F/EDI60</td> <td>Edi 60 digital keypad and PCB interface</td> </tr> </tbody> </table> | Part No. | Description | F/EDI60 | Edi 60 digital keypad and PCB interface | | | | | | | | | | | | | |
| Part No. | Description | | | | | | | | | | | | | | | | | |
| F/EDI60 | Edi 60 digital keypad and PCB interface | | | | | | | | | | | | | | | | | |
| <p>F/EDI60</p> | <p>Card Reader</p> | | | | | | | | | | | | | | | | | |
|  | <table border="1"> <thead> <tr> <th>Part No.</th> <th>Description</th> </tr> </thead> <tbody> <tr> <td>F/MAPUL68</td> <td>Mapul 68 magnetic card key reader</td> </tr> <tr> <td>F/MK</td> <td>Magnetic key with personalised code</td> </tr> </tbody> </table> | Part No. | Description | F/MAPUL68 | Mapul 68 magnetic card key reader | F/MK | Magnetic key with personalised code | | | | | | | | | | | |
| Part No. | Description | | | | | | | | | | | | | | | | | |
| F/MAPUL68 | Mapul 68 magnetic card key reader | | | | | | | | | | | | | | | | | |
| F/MK | Magnetic key with personalised code | | | | | | | | | | | | | | | | | |
| <p>F/MAPUL68</p> | <p>Photocells</p> | | | | | | | | | | | | | | | | | |
|  | <table border="1"> <thead> <tr> <th>Part No.</th> <th>Description</th> </tr> </thead> <tbody> <tr> <td>F/TRIFO11</td> <td>Trifo 11 Photocell (receiver and transmitter) - surface mounted. Self-aligning beam - max. range 6m.</td> </tr> <tr> <td>F/POLO44</td> <td>Polo 44 Photocell (receiver and transmitter) - semi flush mounting. See page 31 for surface mounted housing - max. range 12m.</td> </tr> </tbody> </table> | Part No. | Description | F/TRIFO11 | Trifo 11 Photocell (receiver and transmitter) - surface mounted. Self-aligning beam - max. range 6m. | F/POLO44 | Polo 44 Photocell (receiver and transmitter) - semi flush mounting. See page 31 for surface mounted housing - max. range 12m. | | | | | | | | | | | |
| Part No. | Description | | | | | | | | | | | | | | | | | |
| F/TRIFO11 | Trifo 11 Photocell (receiver and transmitter) - surface mounted. Self-aligning beam - max. range 6m. | | | | | | | | | | | | | | | | | |
| F/POLO44 | Polo 44 Photocell (receiver and transmitter) - semi flush mounting. See page 31 for surface mounted housing - max. range 12m. | | | | | | | | | | | | | | | | | |
| <p>F/MAPUL68</p> | <p>Token Machine</p> | | | | | | | | | | | | | | | | | |
|  | <table border="1"> <thead> <tr> <th>Part No.</th> <th>Description</th> </tr> </thead> <tbody> <tr> <td>F/TOCM</td> <td>Electro-mechanical token operated machine with metal casing and stand - 240V.</td> </tr> <tr> <td>F/COIN</td> <td>Token for above machine.</td> </tr> </tbody> </table> | Part No. | Description | F/TOCM | Electro-mechanical token operated machine with metal casing and stand - 240V. | F/COIN | Token for above machine. | | | | | | | | | | | |
| Part No. | Description | | | | | | | | | | | | | | | | | |
| F/TOCM | Electro-mechanical token operated machine with metal casing and stand - 240V. | | | | | | | | | | | | | | | | | |
| F/COIN | Token for above machine. | | | | | | | | | | | | | | | | | |
| <p>F/ED160</p> | <p>Loop Detector</p> | | | | | | | | | | | | | | | | | |
|  | <table border="1"> <thead> <tr> <th>Part No.</th> <th>Description</th> </tr> </thead> <tbody> <tr> <td>F/LOOP</td> <td>Ground loop detector card with cable harness - for use with Elpro range of electronic control units.</td> </tr> <tr> <td>F/LCABLE</td> <td>Cable loop - 100m length</td> </tr> </tbody> </table> | Part No. | Description | F/LOOP | Ground loop detector card with cable harness - for use with Elpro range of electronic control units. | F/LCABLE | Cable loop - 100m length | | | | | | | | | | | |
| Part No. | Description | | | | | | | | | | | | | | | | | |
| F/LOOP | Ground loop detector card with cable harness - for use with Elpro range of electronic control units. | | | | | | | | | | | | | | | | | |
| F/LCABLE | Cable loop - 100m length | | | | | | | | | | | | | | | | | |
| <p>F/ED160</p> | <p>Push Button</p> | | | | | | | | | | | | | | | | | |
| | <table border="1"> <thead> <tr> <th>Part No.</th> <th>Description</th> </tr> </thead> <tbody> <tr> <td>F/RADI12KPPF</td> <td>Partial Flush Keypad.</td> </tr> <tr> <td>F/RADI12KP</td> <td>Keypad only.</td> </tr> <tr> <td>F/RADI12DC</td> <td>Rectifier.</td> </tr> <tr> <td>F/RADI12PSU</td> <td>Power supply 12vdc.</td> </tr> </tbody> </table> | Part No. | Description | F/RADI12KPPF | Partial Flush Keypad. | F/RADI12KP | Keypad only. | F/RADI12DC | Rectifier. | F/RADI12PSU | Power supply 12vdc. | | | | | | | |
| Part No. | Description | | | | | | | | | | | | | | | | | |
| F/RADI12KPPF | Partial Flush Keypad. | | | | | | | | | | | | | | | | | |
| F/RADI12KP | Keypad only. | | | | | | | | | | | | | | | | | |
| F/RADI12DC | Rectifier. | | | | | | | | | | | | | | | | | |
| F/RADI12PSU | Power supply 12vdc. | | | | | | | | | | | | | | | | | |
| <p>F/ED160</p> | <p>Loop Construction - For Use with F/LOOP using F/LCABLE</p> | | | | | | | | | | | | | | | | | |
| | <div style="display: flex; align-items: center;"> <div style="flex: 1;">  <p>Saw cut depth 50mm to 75mm</p> <p>Loop cable</p> <p>Feeder cable (Twisted together) (20 turns per metre)</p> </div> <div style="flex: 1;"> <table border="1"> <thead> <tr> <th colspan="2">Number of turns by perimeter</th> <th rowspan="2">No. of turns</th> </tr> <tr> <th>Perimeter</th> <th></th> </tr> <tr> <th>Metres</th> <th>Feet</th> <td></td> </tr> </thead> <tbody> <tr> <td>4.0-6.0</td> <td>12-18</td> <td>4</td> </tr> <tr> <td>6.0-10.0</td> <td>18-30</td> <td>3</td> </tr> <tr> <td>10.0-30.0</td> <td>30-90</td> <td>2</td> </tr> </tbody> </table> </div> </div> | Number of turns by perimeter | | No. of turns | Perimeter | | Metres | Feet | | 4.0-6.0 | 12-18 | 4 | 6.0-10.0 | 18-30 | 3 | 10.0-30.0 | 30-90 | 2 |
| Number of turns by perimeter | | No. of turns | | | | | | | | | | | | | | | | |
| Perimeter | | | | | | | | | | | | | | | | | | |
| Metres | Feet | | | | | | | | | | | | | | | | | |
| 4.0-6.0 | 12-18 | 4 | | | | | | | | | | | | | | | | |
| 6.0-10.0 | 18-30 | 3 | | | | | | | | | | | | | | | | |
| 10.0-30.0 | 30-90 | 2 | | | | | | | | | | | | | | | | |
| <p>F/ED160</p> | <p>F/LOOP</p> | | | | | | | | | | | | | | | | | |

TRANSMITTERS

|  | Astro 75 - 315 MHz | | | | | | | | | | | | | | |
|---|---|----------|-------------|---------|--|---------|--|-----------|---|------------|--|----------|--|----------|--|
| <p>ASTRO 75 F/A752T</p> | <table border="1"> <thead> <tr> <th>Part No.</th> <th>Description</th> </tr> </thead> <tbody> <tr> <td>F/A752T</td> <td>Astro 75 2 button transmitter. Site code is set using switches inside the transmitter.</td> </tr> <tr> <td>F/A754T</td> <td>Astro 75 4 button transmitter. Site code is set using switches inside the transmitter.</td> </tr> <tr> <td>F/A75PIRR</td> <td>Plug-in receiver for Elpro control panels. Site code is set using switches on the receiver.</td> </tr> <tr> <td>F/A75ICR</td> <td>Standalone radio receiver for Elpro control panels. Site code is set using switches on the receiver. 24v AC.</td> </tr> <tr> <td>F/AERIAL</td> <td>Passive aerial for use with Astro 75 receivers. Supplied with 3m coax cable.</td> </tr> <tr> <td>F/984317</td> <td>Plug-in relay. 1 relay is required for each of the spare channels of the F/75ICR.</td> </tr> </tbody> </table> | Part No. | Description | F/A752T | Astro 75 2 button transmitter. Site code is set using switches inside the transmitter. | F/A754T | Astro 75 4 button transmitter. Site code is set using switches inside the transmitter. | F/A75PIRR | Plug-in receiver for Elpro control panels. Site code is set using switches on the receiver. | F/A75ICR | Standalone radio receiver for Elpro control panels. Site code is set using switches on the receiver. 24v AC. | F/AERIAL | Passive aerial for use with Astro 75 receivers. Supplied with 3m coax cable. | F/984317 | Plug-in relay. 1 relay is required for each of the spare channels of the F/75ICR. |
| Part No. | Description | | | | | | | | | | | | | | |
| F/A752T | Astro 75 2 button transmitter. Site code is set using switches inside the transmitter. | | | | | | | | | | | | | | |
| F/A754T | Astro 75 4 button transmitter. Site code is set using switches inside the transmitter. | | | | | | | | | | | | | | |
| F/A75PIRR | Plug-in receiver for Elpro control panels. Site code is set using switches on the receiver. | | | | | | | | | | | | | | |
| F/A75ICR | Standalone radio receiver for Elpro control panels. Site code is set using switches on the receiver. 24v AC. | | | | | | | | | | | | | | |
| F/AERIAL | Passive aerial for use with Astro 75 receivers. Supplied with 3m coax cable. | | | | | | | | | | | | | | |
| F/984317 | Plug-in relay. 1 relay is required for each of the spare channels of the F/75ICR. | | | | | | | | | | | | | | |
|  | Astro 43 - 433.92 MHz | | | | | | | | | | | | | | |
| <p>ASTRO 43 - 2 buttons F/A432T</p> | <table border="1"> <thead> <tr> <th>Part No.</th> <th>Description</th> </tr> </thead> <tbody> <tr> <td>F/A432T</td> <td>Astro 43 2 button transmitter. Site code is set using switches inside the transmitter.</td> </tr> <tr> <td>F/A434T</td> <td>Astro 43 4 button transmitter. Site code is set using switches inside the transmitter.</td> </tr> <tr> <td>F/A43PIRR</td> <td>Plug-in receiver for Elpro control panels. Site code is set using switches on the receiver.</td> </tr> <tr> <td>F/A43ICRSA</td> <td>Standalone radio receiver for Elpro control panels. Site code is set using switches on the receiver. 24v AC.</td> </tr> <tr> <td>F/AERIAL</td> <td>Passive aerial for use with Astro 43 receivers. Supplied with 3m coax cable.</td> </tr> <tr> <td>F/984317</td> <td>Plug-in relay. 1 relay is required for each of the spare channels of the F/A43ICRSA.</td> </tr> </tbody> </table> | Part No. | Description | F/A432T | Astro 43 2 button transmitter. Site code is set using switches inside the transmitter. | F/A434T | Astro 43 4 button transmitter. Site code is set using switches inside the transmitter. | F/A43PIRR | Plug-in receiver for Elpro control panels. Site code is set using switches on the receiver. | F/A43ICRSA | Standalone radio receiver for Elpro control panels. Site code is set using switches on the receiver. 24v AC. | F/AERIAL | Passive aerial for use with Astro 43 receivers. Supplied with 3m coax cable. | F/984317 | Plug-in relay. 1 relay is required for each of the spare channels of the F/A43ICRSA. |
| Part No. | Description | | | | | | | | | | | | | | |
| F/A432T | Astro 43 2 button transmitter. Site code is set using switches inside the transmitter. | | | | | | | | | | | | | | |
| F/A434T | Astro 43 4 button transmitter. Site code is set using switches inside the transmitter. | | | | | | | | | | | | | | |
| F/A43PIRR | Plug-in receiver for Elpro control panels. Site code is set using switches on the receiver. | | | | | | | | | | | | | | |
| F/A43ICRSA | Standalone radio receiver for Elpro control panels. Site code is set using switches on the receiver. 24v AC. | | | | | | | | | | | | | | |
| F/AERIAL | Passive aerial for use with Astro 43 receivers. Supplied with 3m coax cable. | | | | | | | | | | | | | | |
| F/984317 | Plug-in relay. 1 relay is required for each of the spare channels of the F/A43ICRSA. | | | | | | | | | | | | | | |
|  | Jubi 433 - 433 MHz | | | | | | | | | | | | | | |
| <p>ASTRO 43 - 4 buttons F/A434T</p> | <p>For use where a greater level of security is required. Rolling Code technology is also useful in very busy areas or where standard transmitters suffer from interference. The transmitters are programmed through the self learning function on the receiver:</p> | | | | | | | | | | | | | | |
|  | <table border="1"> <thead> <tr> <th>Part No.</th> <th>Description</th> </tr> </thead> <tbody> <tr> <td>F/J2T</td> <td>Jubi 433 small 2 button transmitter. Rolling code function.</td> </tr> <tr> <td>F/J4T</td> <td>Jubi 433 4 button transmitter. Rolling code function.</td> </tr> <tr> <td>F/JPIRR</td> <td>Plug-in receiver for Elpro control panels. Features a rolling code function with the transmitters being programmable.</td> </tr> <tr> <td>F/JICRSA</td> <td>Standalone receiver for Elpro control panels. Features a rolling code function with the transmitters being programmable. 24v AC.</td> </tr> <tr> <td>F/AERIAL</td> <td>Passive aerial for use with Jubi 433 receivers. Supplied with 3m coax cable.</td> </tr> <tr> <td>F/984317</td> <td>Plug-in relay. 1 relay is required for each of the spare channels of the F/JICRSA.</td> </tr> </tbody> </table> | Part No. | Description | F/J2T | Jubi 433 small 2 button transmitter. Rolling code function. | F/J4T | Jubi 433 4 button transmitter. Rolling code function. | F/JPIRR | Plug-in receiver for Elpro control panels. Features a rolling code function with the transmitters being programmable. | F/JICRSA | Standalone receiver for Elpro control panels. Features a rolling code function with the transmitters being programmable. 24v AC. | F/AERIAL | Passive aerial for use with Jubi 433 receivers. Supplied with 3m coax cable. | F/984317 | Plug-in relay. 1 relay is required for each of the spare channels of the F/JICRSA. |
| Part No. | Description | | | | | | | | | | | | | | |
| F/J2T | Jubi 433 small 2 button transmitter. Rolling code function. | | | | | | | | | | | | | | |
| F/J4T | Jubi 433 4 button transmitter. Rolling code function. | | | | | | | | | | | | | | |
| F/JPIRR | Plug-in receiver for Elpro control panels. Features a rolling code function with the transmitters being programmable. | | | | | | | | | | | | | | |
| F/JICRSA | Standalone receiver for Elpro control panels. Features a rolling code function with the transmitters being programmable. 24v AC. | | | | | | | | | | | | | | |
| F/AERIAL | Passive aerial for use with Jubi 433 receivers. Supplied with 3m coax cable. | | | | | | | | | | | | | | |
| F/984317 | Plug-in relay. 1 relay is required for each of the spare channels of the F/JICRSA. | | | | | | | | | | | | | | |
| <p>JUBI F/J2T</p> | | | | | | | | | | | | | | | |
|  | | | | | | | | | | | | | | | |
| <p>JUBI F/J4T</p> | | | | | | | | | | | | | | | |
|  | <p>Please note:</p> <p>The old style Astro 75 transmitter has been replaced by the F/A752T or F/A754T and the old style Astro 43 2 button transmitter has been replaced by the F/A432T.</p> | | | | | | | | | | | | | | |
| <p>Old style Astro 75 Old style Astro 43</p> |  | | | | | | | | | | | | | | |

BPT AUDIO ENTRY KITS

BPT's range of audio entry kits is among the most cost-effective on the market, offering not only stylish good looks with the slim Targha entry panel, but also offering a robust range for tough environments, integration options to include access control at varying levels of security and products designed to meet the Disability Discrimination Act 1995. All our kits offer our renowned quality, value and ease of installation plus the option to expand them into multi-door or multi-handset systems. Please call for details.

Flush vandal resistant audio entry panel & Lynea handset - AKIT/IVRYC

A robust kit combining a flush audio entry panel made from 12swg vandal resistant stainless steel with the stylish Lynea YC/200UK handset with lock release and auxiliary button. The kit is complete with the A/200N control unit and PSU rated 150mA DC - 650mA AC, enough to power 3 handsets on the same call.



Targha aluminium audio entry panel and Lynea handset - VSETIN/HPYCUK

One of the most successful audio entry kits on the market with a 1 button, surface mount, aluminium Targha entry panel featuring a functional drip moulding to drain away water and an illuminated button together with the stylish Lynea YC/200UK handset with lock release and auxiliary button. The kit is complete with the A/200N control unit and PSU rated 150mA DC - 650mA AC, enough to power 3 handsets on the same call.



Targha aluminium audio entry panel and Lynea handset - VSETIN/HNA

This kit combines the 1 button, surface mount, aluminium Targha entry panel with an integrated access control keypad (100 codes/2 relays) together with the stylish Lynea YC/200UK handset with lock release and auxiliary button. The kit is complete with the A/200N control unit and PSU rated 150mA DC - 650mA AC, enough to power 3 handsets on the same call.



Flush vandal resistant audio entry panel with proximity reader cut-out and Lynea handset - AKIT/IVRIMPYC

A robust kit combining a flush audio entry panel made from 12swg vandal resistant stainless steel with a cut-out to accommodate a proximity access control reader (reader and controller not included) together with the stylish Lynea YC/200UK handset with lock release and auxiliary button. The kit is complete with the A/200N control unit and PSU rated 150mA DC - 650mA AC, enough to power 3 handsets on the same call.



Flush vandal resistant audio DDA entry panel and Lynea handset - AKIT/IDDAYC

A robust kit combining a flush DDA audio entry panel made from 12swg vandal resistant stainless steel with tactile illuminated button, braille characters, 'Door Open' and 'Speak Now' LED indicators together with the stylish Lynea YC/200UK handset with lock release and auxiliary button. The kit is complete with the A/200N control unit and PSU rated 150mA DC - 650mA AC, enough to power 3 handsets on the same call.



Targha vandal resistant audio entry panel and Lynea handset - AKIT/ITARVR

This kit combines the robust Targha vandal resistant entry panel with the stylish Lynea YC/200UK handset with lock release and auxiliary button. The kit is complete with the A/200N control unit and PSU rated 150mA DC - 650mA AC, enough to power 3 handsets on the same call.



Flush vandal resistant audio entry panel with integrated access control keypad and Lynea handset - AKIT/IVRACYC

A robust kit combining an audio entry panel made from a flush 12swg vandal resistant stainless steel with an integrated access control keypad (100 codes/2 relays) together with the stylish Lynea YC/200UK handset with lock release and auxiliary button. The kit is complete with the A/200N control unit and PSU rated 150mA DC - 650mA AC, enough to power 3 handsets on the same call.



Audio Entry Control Accessories

| | |
|----------------|--|
| IT/200 | Telephone interface which enables a BPT intercom system to be integrated to a BT type telephone system allowing the call from the entry panel to be answered on a BT telephone or the BPT handset. The gate or door can be unlocked using a designated number on the BT telephone keypad or button on the BPT handset. |
| XT/200+XKP/128 | Wall mounted BPT telephone handset for use with the IT/200 |

Mounting Posts for Entry Panels

| | |
|----------|---|
| HDP/2000 | 2m high stainless steel, 80x80 box section with mounting plate |
| HDP/1200 | 1.2m high stainless steel, 80x80 box section with mounting plate |
| TP/1200 | 1.2m high tubular polished stainless steel with mounting plate |
| HDP/DUAL | Stainless steel, 80x80 box section, dual height with mounting plate |

BPT VIDEO ENTRY KITS

BPT's range of video entry kits is among the most cost-effective on the market, offering not only stylish good looks with the slim Targha entry panel, but also offering a robust range for tough environments, integration options to include access control at varying levels of security and products designed to meet the Disability Discrimination Act 1995, as well as award-winning monitors. All our kits offer our renowned quality, value and ease of installation plus the option to expand them into multi-door or multi-monitor systems. Please call for details.

Flush vandal resistant video entry panel with proximity reader cut-out and Lynea black & white monitor - VKIT/IVRIMPYVF

A robust kit combining a flush video entry panel made from 12swg vandal resistant stainless steel with a cut-out to accommodate a proximity access control reader (reader and controller not included) together with the latest Lynea black & white monitor which has a 4.5" screen and buttons to control the lock release, auxiliary buttons, contrast and brightness. The kit is complete with the VA/200 control unit & PSU rated 60VA output 17.5DC 0.9A.



Targha aluminium video entry panel and Lynea black & white monitor - VSET/200YVF-IHSV



One of the most successful and cost-effective video entry kits on the market with a sleek 1 button, surface mount, aluminium Targha entry panel housing a black & white adjustable camera with infrared back lighting together with the latest Lynea black & white monitor which has a 4.5" screen and buttons to control the lock release, auxiliary buttons, contrast and brightness. The kit is complete with the VA/200 control unit & PSU rated 60VA output 17.5DC 0.9A. Also available with colour monitor - VSET200YVC-I/HPV

Flush vandal resistant video entry panel and Lynea black & white monitor - VKIT/IVRYVF

A robust kit combining a flush video entry panel made from 12swg vandal resistant stainless steel with the latest Lynea black & white monitor which has a 4.5" screen and buttons to control the lock release, auxiliary buttons, contrast and brightness. The kit is complete with the VA/200 control unit & PSU rated 60VA output 17.5DC 0.9A. To surface mount, add VRSH/I



Targha aluminium video entry panel and Nova video monitor - VKIT/ITARNOV

This kit combines the 1 button, surface mount, aluminium Targha entry panel housing an adjustable colour camera together with the award-winning Nova video monitor featuring a 2" colour screen, a lock release, monitor live and 2 auxiliary buttons, brightness and contrast controls and an audio button. The kit is complete with the VA/200 control unit & PSU rated 60VA output 17.5DC 0.9A



Targha aluminium video entry panel with integrated access control keypad and Lynea black & white monitor - VKIT/IHNAYVF

This kit combines the 1 button, surface mount, aluminium Targha entry panel housing a black & white adjustable camera with an integrated access control keypad (100 codes/2 relays) together with the latest Lynea black & white monitor which has a 4.5" screen and buttons to control the lock release, auxiliary buttons, contrast and brightness. The kit is complete with the VA/200 control unit & PSU rated 60VA output 17.5DC 0.9A.



Flush vandal resistant video entry panel with integrated access control keypad and Lynea black & white monitor - VKIT/IVRACYVF

A robust kit combining a flush video entry panel made from 12swg vandal resistant stainless steel with an integrated access control keypad (100 codes/2 relays) together with the latest Lynea black & white monitor which has a 4.5" screen and buttons to control the lock release, auxiliary buttons, contrast and brightness. The kit is complete with the VA/200 control unit & PSU rated 60VA output 17.5DC 0.9A.



Video Entry Control Accessories

| | |
|------------------|--|
| IT/200 | Telephone interface which enables a BPT intercom system to be integrated to a BT type telephone system allowing the call from the entry panel to be answered on a BT telephone or the BPT monitor. The gate or door can be unlocked using a designated number on the BT telephone keypad or button on the BPT monitor. |
| XV/200 + XKP/128 | Wall mounted BPT video monitor for use with the IT/200 |

Mounting Posts for Entry Panels

| | |
|----------|---|
| HDP/2000 | 2m high stainless steel, 80x80 box section with mounting plate |
| HDP/1200 | 1.2m high stainless steel, 80x80 box section with mounting plate |
| TP/1200 | 1.2m high tubular polished stainless steel with mounting plate |
| HDP/DUAL | Stainless steel, 80x80 box section, dual height with mounting plate |



Pedestrian Gates

SupaGate Controllers

The concept behind SupaGate is to provide the most cost-effective secure solution for small applications that do not require a PC for programming. All three units are programmed from the controller with a maximum 99 users and depending on the version selected, can operate RF tags, standard proximity readers (max 20m from the SupaGate controllers) and personal access codes. They are simple to program and offer great value.



SupaGate Lite

GB/SGI910

SupaGate Lite is a simple, standalone single door controller supplied with a keypad reader (SGI/913) for up to 99 users. Access can be gained using a standard tag or a personal access code.

SupaGate

GB/SGI911
GB/XQT904



SupaGate can control up to 4 relays using the GB/XQT904 RF tag (left). One of the relays can also be controlled by a standard proximity reader, providing a solution whereby access could be gained for the same gate or door by using a RF tag, a standard tag or a personal access code.

SupaGate Plus

GB/SGI912

SupaGate Plus has the same functionality as the SupaGate and permits a second relay to be controlled by a standard proximity reader.

SupaGate Plus in Enclosure

GB/SGI914

SupaGate Plus supplied in IP66 weatherproof enclosure when needing to be installed externally.



Vehicle Gates



Front Doors & Office Doors; Garage Door/Roller Shutters

ImproS2 Features

- Easy installation and set-up
- Standalone editing and operation - no PC is required
- The system records Installer, Editor or User status to each tag for programming authorisation
- 6 key keypad on controller for ease of operation
- Readers can be fitted into audio or video entry panels
- Choice of readers - panel mount and mullion
- 16 x 2 character LCD displaying English text for user-friendly operation
- Controller supports 'Secure Mode', where all user tags are denied access
- State-of-the-art 125KHz proximity reader technology
- Database copy facility, enabling fast-commissioning to multiple-controllers with same users
- Auto-configuring for single door operation, saving installer on-site time

ImproS2 Standalone for 1-2 Doors, 2,000 Users

The complete standalone, passive, no-contact, proximity access control system for single or 2 door applications, including residential, surgeries and small industrial and commercial premises. Each ImproS2 controller supports 2 proximity readers or up to 4 readers for full read in and read out control of 2 doors. Up to 2,000 tags. The system simply grants or denies access to tags through either or both of the doors. Designed for ease of use and reliability.



ImproS2 system with controller and 2 GB/MIT900 readers in read only mode



ImproS2 system with controller and 4 GB/MIT900 readers in read in and read out mode

| | |
|--------------|---|
| GB/IMPROS2 | 2 door controller (4 readers in anti-passback mode) |
| GB/MIT900 | ImproS2 mullion mount grey external/internal reader |
| GB/MIT201 | ImproS2 panel mount reader |
| GB/XTT12V-1A | 12V DC 1A PSU with battery terminals |
| GB/XTT12V-2A | 12V DC 2A PSU with battery terminals |



Systems from one door to 3,000 and one user to 160,000 across 256 sites, all controlled on site via PC or remotely, via the ethernet.

Being among the top suppliers of proximity access control equipment in the world, Impro sets the standards for products, using the latest, fully-proven technology. Combined with BPT's full design service and technical back-up, Impro is proving to be one of the more popular choices for specifiers, when looking to control access to buildings.

Impro has the most extensive feature to price ratio on the market and includes more features as standard such as full colour graphic plans, intelligent vehicle access control, full card printing software, lift/elevator control and 3 read in and read out modes.

For more information on Impro access control, please call 01442 230800 or email sales@bpt.co.uk.

Impro control packages - making specifying quoting any size of system as easy as 1, 2, 3...!

- Step 1 - Select your control package based on the number of doors required
- Step 2 - Add your door controller - 1 for every 2 additional doors in read in only mode
- Step 3 - Select your Impro reader from our wide choice



GB/XQT904 transmitter shown to GB/XTT903 reader

Impro control packages

- Impro4 -** 2 door controller; expandable to 4 doors, up to 10,000 sites, 2,000 tags and offers vehicle access and 3rd party reader options plus web reports, timesheets and more. The controller kit includes the main controller; USB connection and software. Multi-site options are provided via modem and ethernet connections.
- Impro16 -** Economical and flexible 16 door system able to manage up to 2,000 users with features such as lift control, graphical user interface, web reports and much more. The controller kit includes the main controller; USB connection, tag registration reader; software and first GB/XTT900 2 door controller. Multi-site options are offered via modem connection.
- Impro64+ -** Capable of expansion to 3,000 readers, 160,000 tags per site, up to 256 sites and offers CCTV integration, full building and car park management, web reports and more. The Impro64+ controller kit includes the main controller; USB connection, tag registration reader; software and first GB/XTT900 2 door controller. Multi-site options are offered via ethernet connection.

Impro reader range

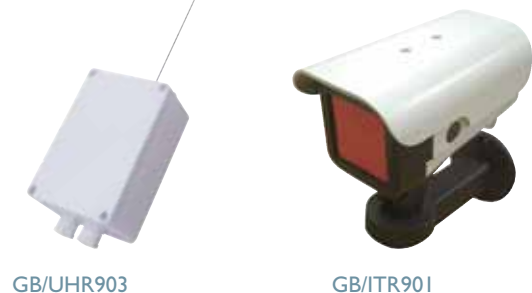
Standard proximity readers for short distances to controller



* - Best read range no more than 20m from controller. Reduced read range max 40m
 ** - Best read range no more than 20m from controller.

Vehicle access receivers

44 bit Wiegand output prox readers - ideal if the reader is located up to 100m away from the door controller



The GB/IWP900 can also be panel mount to achieve greater distances from the controller.

SITE ASSESSMENT FORM

SWING GATES

YOUR DETAILS

Date: _____

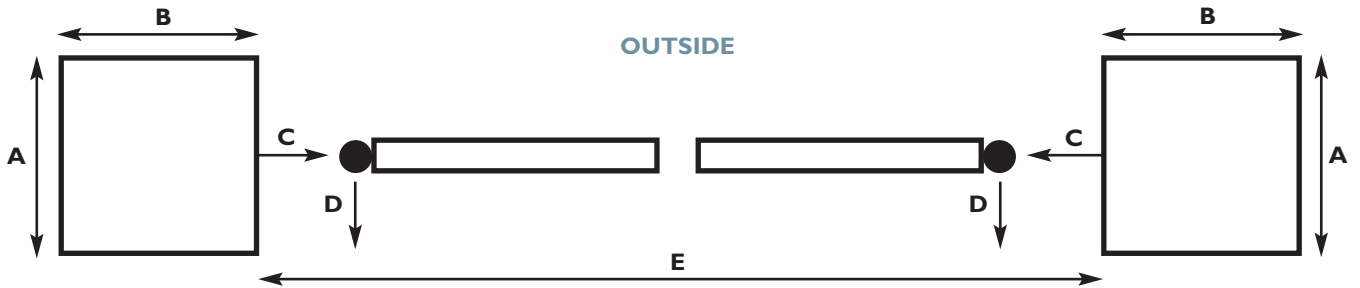
Contact Name: _____ Tel No: _____

Company Name: _____ Fax No: _____

Address: _____ E-mail: _____

_____ Site: _____

PLAN OF SWING GATES



GATE MEASUREMENTS

| | Plan Ref. | L/H Post | R/H Post |
|--|-----------|----------------------|----------------------|
| Depth of Post (mm) | A | <input type="text"/> | <input type="text"/> |
| Width of Post (mm) | B | <input type="text"/> | <input type="text"/> |
| Hinge Centre to Inside Face of Post (mm) | C | <input type="text"/> | <input type="text"/> |
| Hinge Centre to Rear Face of Post (mm) | D | <input type="text"/> | <input type="text"/> |
| Width of Entrance (mm) | E | <input type="text"/> | <input type="text"/> |

TYPE OF GATE OPERATOR

Surface Mounted Rams Underground Operators

GATE DETAILS

Gate Material

Post Material

Single Leaf Twin Leaf

Open Pattern Closed Boarded

Inward Opening Outward Opening

Opening Angle Required

Operations an Hour (busiest period)

Driveway Inclined Level

ACCESS/SAFETY REQUIRED

Radio Control No. of Transmitters

Digital Keypad Key Switch

No. of Keys

Audio Entry System Video Entry System

Safety Photocells: One Pair Two Pair

Safety Loop

Free Exit Loop

Photocells for Free Exit

PLEASE COMPLETE AND FAX TO 01442 244729 FOR A QUOTATION

SITE ASSESSMENT FORM

SLIDING GATES

YOUR DETAILS

Date: _____

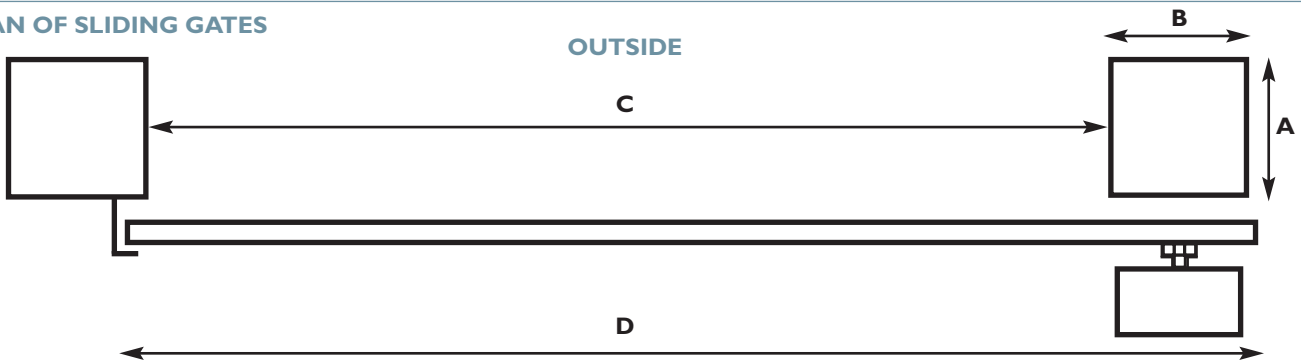
Contact Name: _____ Tel No: _____

Company Name: _____ Fax No: _____

Address: _____ E-mail: _____

Site: _____

PLAN OF SLIDING GATES



GATE MEASUREMENTS

| | Plan Ref. | |
|---------------------------|-----------|----------------------|
| Depth of Post (mm) | A | <input type="text"/> |
| Width of Post (mm) | B | <input type="text"/> |
| Width of Entrance (mm) | C | <input type="text"/> |
| Total Length of Gate (mm) | D | <input type="text"/> |

GATE DETAILS

Gate Material

Post Material

Single Leaf Bi-parting

Estimated Weight of Gate (kg)

Level Driveway Inclined

Open Pattern Closed Boarded

Operations an Hour (busiest period)

GATE ACCESSORIES (if required)

Lower Guide Wheels No.

Nylon Guide Rollers 30mm dia No.

Nylon Guide Rollers 40mm dia No.

CONTROL/ACCESS/SAFETY REQUIRED

Radio Control No. of Transmitters

Digital Keypad Key Switch

No. of Keys Audio Entry System

Video Entry System

Safety Photocells: One Pair Two Pair

Safety Loop Free Exit Loop

Static Pneumatic Safety Edge

Moving Pneumatic Safety Edge

Mechanical Operated Safety Edge

'Gate House' Push Button Control

PLEASE COMPLETE AND FAX TO 01442 244729 FOR A QUOTATION